



SAFE MATERIAL HANDLING
SOLUTIONS
for Dust & Spillage Control

Belt Cleaners

PRIMARY, SECONDARY,
& SPECIALTY

- *Removes material build-up & carryback*
- *Prevents spillage*
- *Deters belt mistracking*
- *Increases belt life*

www.BenetechGlobal.com



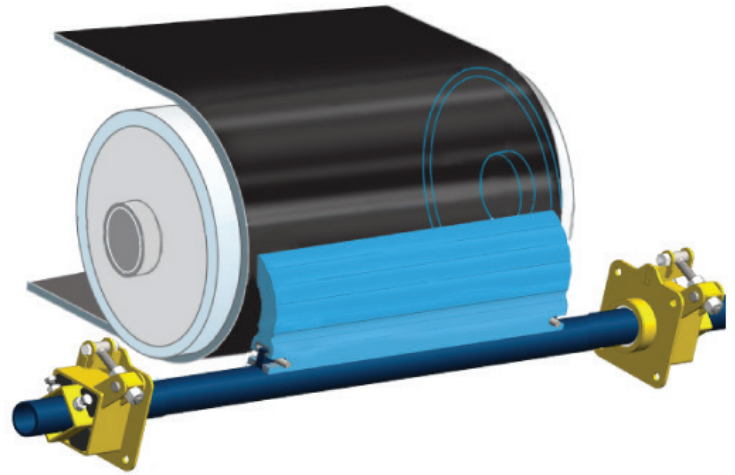
PRIMARY Belt Cleaners

A majority of head pulleys wobble because they are not perfectly round. Benetech's belt cleaners take this wobble into account and correctly adjust to remove sticky material from the belt.

The tip of our blade remains in continuous contact with the belt, thus increasing the blade's cleaning efficiency.

In addition, ordinary cleaning blades scrape the belt surface poorly because they are designed to be thin at the tip and thicker toward the bottom.

Benetech blades maintain a sharp edge thanks to our unique wave profile. Sharpness is maintained at 25%, 50%, 75%, and 100% over the life-time of the belt cleaner.



BEP1

The BEP1's compact modular design mounts easily in tight chute applications and can be positioned on the head pulley in a range of locations. The unique wave profile allows for a varying attack angle that reduces blade-edge bull-nosing.

- Unique wave profile – keeps sharp edge at 25%, 50%, 75%, and 100% wear
- Blade options: standard, chemical-resistant, high temperature, or abrasion-resistant
- Blade: 7" H x Variable length
- Belt speed: 1000 ft/min maximum
- Tensioners: Rosta, Spring, Pneumatic

BEP2

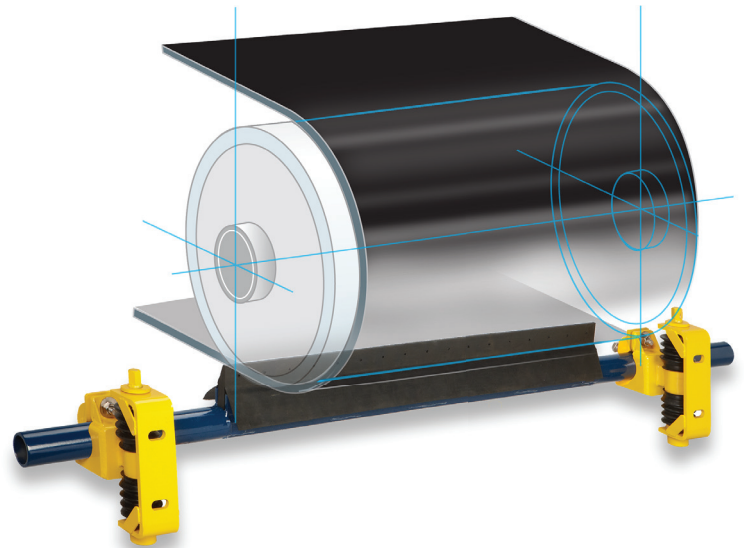
BEP2 is a large, 13 in. high, heavy-duty polyurethane belt cleaner blade that individually contours against the belt for steady blade-to-belt pressure and superior cleaning. Its long blade life decreases change-outs and reduces replacement costs.

- Unique wave profile – keeps edge sharp at 25%, 50%, 75%, and 100% wear points
- Heavy-duty urethane
- Blade: 13" H x 6" W sections
- Belt speed: 1200 ft/min maximum
- Tensioner: Spring

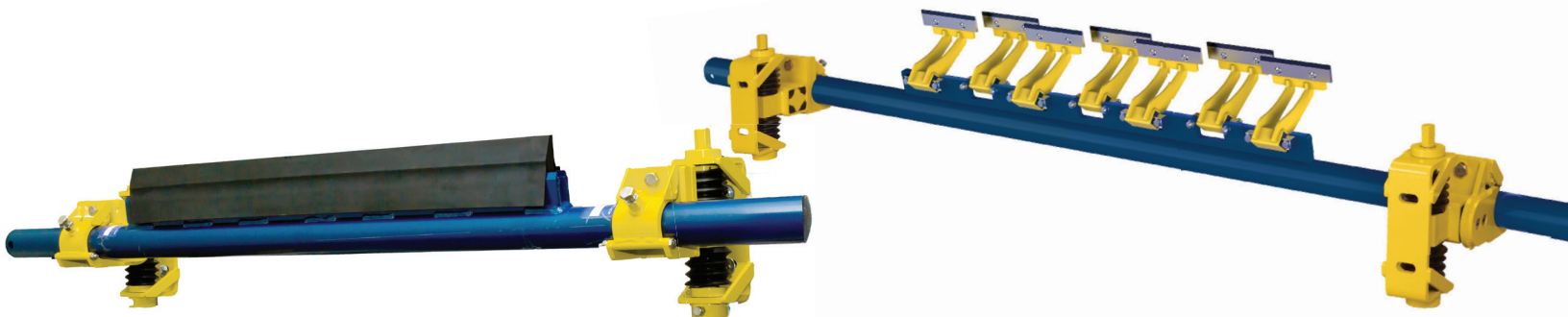
SECONDARY Belt Cleaners

Secondary belt cleaners are typically installed immediately after the belt leaves contact with the drive pulley.

This keeps the material removed by the secondary belt cleaner in the dribble chute area of the transfer point, where it can still be reintroduced back into the main flow of material.



*Eliminates Buildup &
Keeps Material Free-Flowing*



BES1

The BES1's design of one blade makes for quick blade replacement. With no spaces between blades, the uni-blade conforms easily to irregularities in the belt and minor belt cupping.

The dual Rosta arm tensioner allows clips to pass through as long as whatever is on the belt isn't protruding excessively high. Simple linear tensioning by a threaded rod is tensioned once for the blade's life.

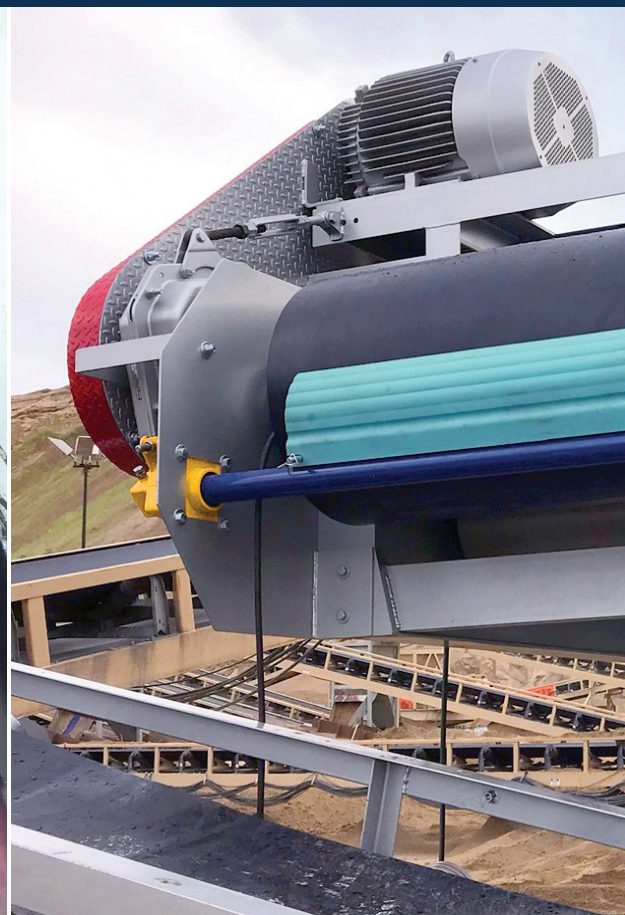
- Excellent for cupped or worn belts
- Blade options: Rubber, Tungsten
- Belt speed: 1000 ft/min. maximum
- Tensioners: Rosta, Pneumatic

BXS5

Individual tungsten or ceramic finger blades adapt to worn belts and allow belt clips to pass through. The high-efficiency blades have superior wear-resistance and maintain blade-to-belt contact.

Double tensioning equipment gives better pressure distribution. Ideal for use on vulcanized or spliced belts.

- Uses overlapping blades for efficient scraping
- Blade options: Tungsten carbide, Ceramic
- Belt speed: 1200 ft/min. maximum
- Tensioners: Rosta, Pneumatic



BENETECH. ADVANTEDGE

HARDER, STIFFER URETHANE FORMULATION

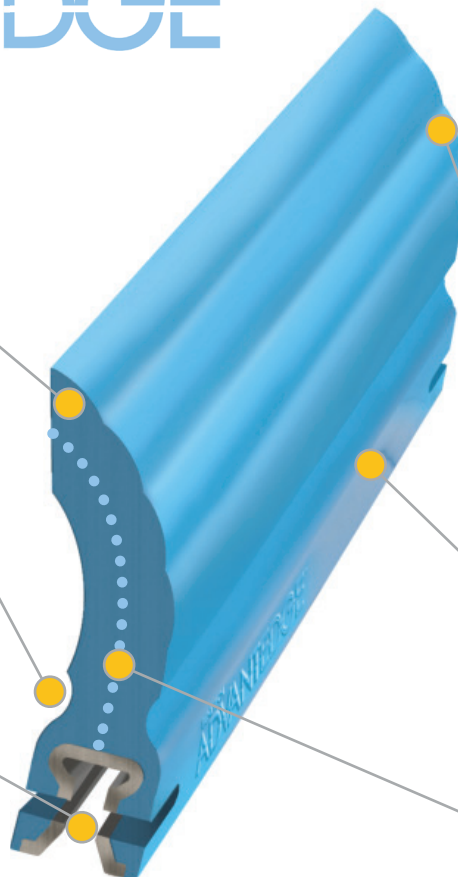
Provides cleaning efficiency and extended wear-life of a metal blade without the disadvantages.

FLEX ARCS

Provides blade flexibility for better belt contact, higher wear resistances and lower friction.

RETROFITS TO COMPETITIVE BRANDS

Sizes available to retrofit any major brand cleaner with 7/16" and 9/16" channels.



WAVE PROFILE

Ensures a variable attack angle to prevent tip bull-nosing and smooths out pressure changes from the tensioner.

Visual Wear Indication:
25% / 50% / 75% / 100%.

WORN OUT BLADE CHECK

When the bubbles are gone, the blade is ready to change out. This patented design uses more of the blade's urethane than any blade on the market.

Results: Less waste, less maintenance

WEAR LENGTH

Our centerline wear path is longer than the competition.

Longer life line = Longer life



RETROFIT BLADES for BEP1 Primary Belt Cleaners

We use only premium polyurethane resins along with specific additives to achieve a superior blade product. Our replacement blades are specifically engineered to eliminate carryback by removing debris from the belt surface.

They are field-tested and proven to withstand the most severe conveying environments. We can match competitors' blades.

Our AdvantEdge blade system can match these competitors' blades:

- American Eagle E1SD
- American Eagle E5SD
- Arch Gordon Saber
- Argonics Raptor
- ASGCO Skalper IV
- Flexco Conshear
- Martin HD QC1
- Martin Standard QC1
- Martin Pit Viper
- Superior Exterra

BEP1 Blade Types

STANDARD (BABY BLUE)

- Example Materials: Coke, Coal, Steel/Ore
- Appropriate for 90% of applications
- Temperature Rating: -20° to 160°F (-30° to 70°C)



CHEMICAL-RESISTANT (NAVY BLUE)

- Example Materials: Limestone
- Temperature Rating: -40° to 160°F (-40° to 70°C)



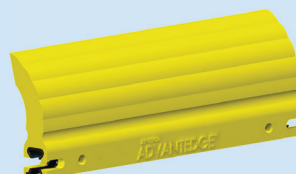
HIGH TEMPERATURE (HOT PINK)

- Example Materials: Clinker
- Temperature Rating (Continuous): -40° to 375°F (-40° to 190°C)
- Intermittent temperatures up to 450°F (232°C)



ABRASION-RESISTANT (YELLOW)

- Example Materials: Aggregate, Rock, Stone, Gravel, Dry Sand, Glass, Wood Chips
- Quarry-line
- Temperature Rating: -20° to 160°F (-40° to 70°C)



SPECIALTY Belt Cleaners

DIAGONAL PLOW

- Can discharge to either side of the conveyor
- Uses rubber cleaner blades
- Endures even the harshest conditions
- Includes double steel cables for belt protection

V-PLOW

- 4" tall rubber blade with easy bolt-in blade replacement ability
- Attaches to the mounting pole at two points with a third point connected to a height-adjustment arm for fine-tuning installation
- Includes wire safety cable for belt protection



WASH BOX

Benetech's Wash Box is designed to provide cleaning efficiency by washing and cleaning carry-back material from the conveyor belt.

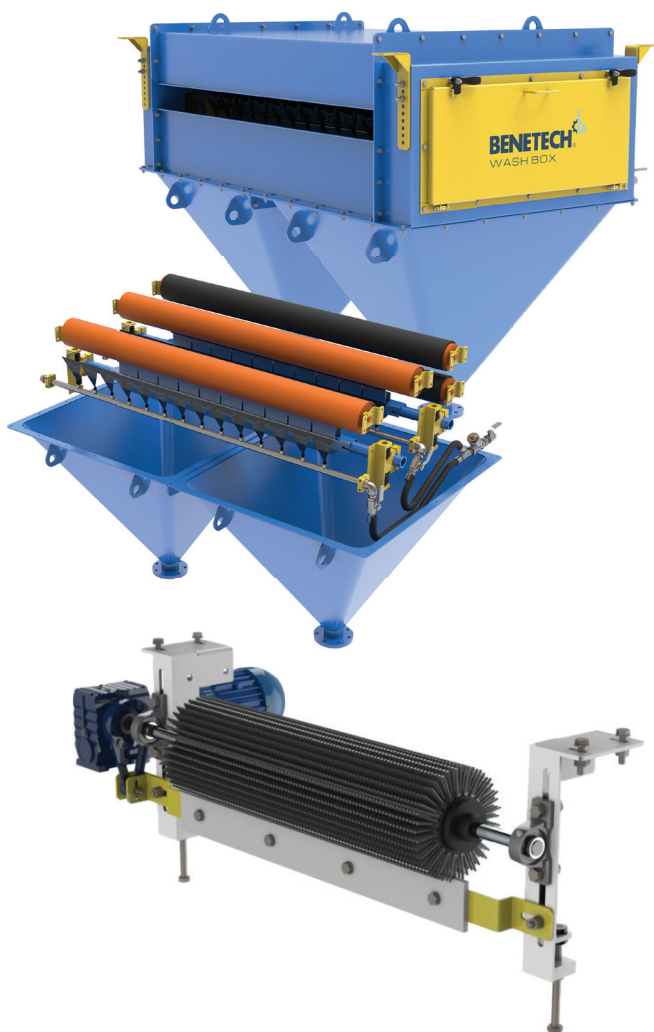
As soon as the equipment enters the cleaning system, the belt passes through the spray nozzles to moisten all residual material.

Internal secondary cleaners remove excess material and discharge waste through the funnel drainage basins. Rollers remove excess water and help dry the belt before exiting the wash box.

- Stainless steel construction
- Utilizes high-pressure spray nozzles for removing waste
- Internal rollers remove excess water and help dry the belt

MOTORIZED BRUSH CLEANER

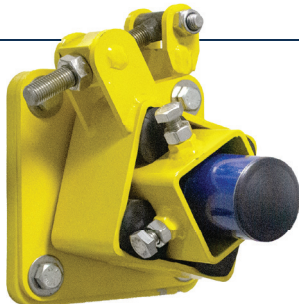
- Rubber bristles remove any residual material on the belt, even in hard-to-reach recessed areas
- Brush rotates only when belt is moving
- Motor turns the brush opposite of belt direction for optimal cleaning
- A cleaner bar makes the whole assembly self-cleaning
- Installed with a 1HP or 2HP motor, depending on belt width
- In-line drive shaft and cleaner bar design allow for easier sealing when installed in an enclosure



BELT CLEANER Tensioners

ROSTA TENSIONER

- Self-contained tensioner
- Easy to set up at installation
- Simple to re-tension
- Provides consistent cleaning pressure as the blade wear



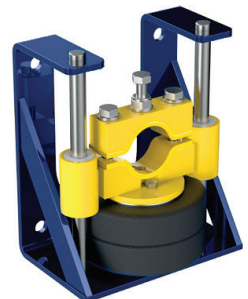
SPRING TENSIONER

- Provides consistent force across the width of blades
- Reduces the need for frequent blade re-tensioning
- Unaffected by extreme temperatures



SELF-ADJUSTING PNEUMATIC TENSIONER

- Maintains precise and consistent tensioning on the blade, resulting in a constant cleaning pressure throughout the entire lifespan of the blade
- Automated via the control panel
- Reduces maintenance hours and labor often required to maintain optimum blade position and pressure with other tensioner types
- Extends life of both the belt and the cleaner



Materials Treated

Benetech's conveyor belt cleaning solutions are made for all transported materials regardless of their hardness, shape, or abrasiveness. Our belt cleaning solutions can manage everything from wood chips, recycled paper, and garbage to iron pellets, coal, and crushed rock.

Aluminum
Animal Feed
Bentonite
Cement

Coal
Copper
Fly Ash
Gypsum

Iron Oxide
Lignite
Limestone
Salt

Sand
Soda Ash
Soybeans
Wood Chips



Contact a Benetech Territory Sales Manager or one of our authorized distributors for more info.

To find your local Territory Sales Manager, visit BenetechGlobal.com/Sales-and-Support-USA/



REDUCE **DUST**

Lower Risk & Increase Safety

PREVENT **SPILLAGE**

Reduce Clean Up & Transfer Cost

IMPROVE **MATERIAL FLOW**

Enhance Productivity & Earnings

ENSURE **COMPLIANCE**

OSHA - MSHA - EPA - NFPA



1851 Albright Rd., Montgomery IL 60538
+1 (800) 843-2625 | info@BenetechUSA.com | BenetechGlobal.com

©2025 Benetech, Inc. | Issue: 2025-09