

### BENETECH ADVANTEDGE

Benetech's AdvantEdge blade design is patented technology that combines the cleaning and wear-life benefits of a metal blade within a safe, urethane blade.

#### HARDER BLADE WITHOUT THE TYPICAL PROBLEMS

- Flexing feature minimizes differential pressure at belt surface, ensuring good contact and improved cleaning as well as increasing blade life
- Hard edge blade for excellent cleaning performance
- Unique design allows blade to flex and follow contours of belt

#### UNIQUE "WAVE" PROFILE

- Creates a variable tip attack angle to belt reducing blade edge bull-nosing
- Changing profile smooths the over/under-pressure supplied by most tensioners and creates a constant cleaning pressure
- Variable attack angle provides optimum cleaning as conditions of belt and material changes
- Prevents blade separating and splitting

#### USES MORE OF THE BLADE FOR CLEANING THAN COMPETITIVE BRANDS DO

- Typical industry urethane blades toss away 25% or more of the blade when they are "worn" out
- A "worn" AdvantEdge blade has only about 10% of the urethane remaining
- Comparative results: 1) significant increase in wear life, 2) less overall cost, and 3) less service maintenance

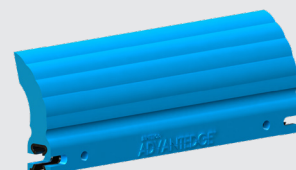
#### "FLEX CURVES" ALLOW THE BLADE TO WORK WITH THE BELT

- Indented arcs on both sides of bottom of the blade profile allow the blade to flex and bend more readily as the tip is forced back and forth with the belt changes
- Allows use of a harder urethane for superior cleaning results without sacrificing blade life
- "Flex Curves" assure: 1) best-in-class cleaning performance, 2) good tip contact, and 3) extended wear

## Blade Types

### STANDARD – BABY BLUE

- Example Materials: Coke, Coal, Steel/ Ore
- Appropriate for 90% of applications
- Temperature Rating: -20° to 160°F (-30° to 70°C)



### CHEMICAL RESISTANT – NAVY BLUE

- Example Materials: Limestone
- Temperature Rating: -40° to 160°F (-40° to 70°C)



### HIGH TEMPERATURE – HOT PINK

- Example Materials: Clinker
- Temperature Rating (Continuous): -40° to 375°F (-40° to 190°C)
- Intermittent temperatures up to 450°F (232°C)



### ABRASION RESISTANT – YELLOW

- Example Materials: Aggregate, Rock, Stone, Gravel, Dry Sand, Glass, Wood Chips
- Quarry-line
- Temperature Rating: -20° to 160°F (-40° to 70°C)



# BENETECH ADVANTEDGE

## HARDER, STIFFER URETHANE FORMULATION

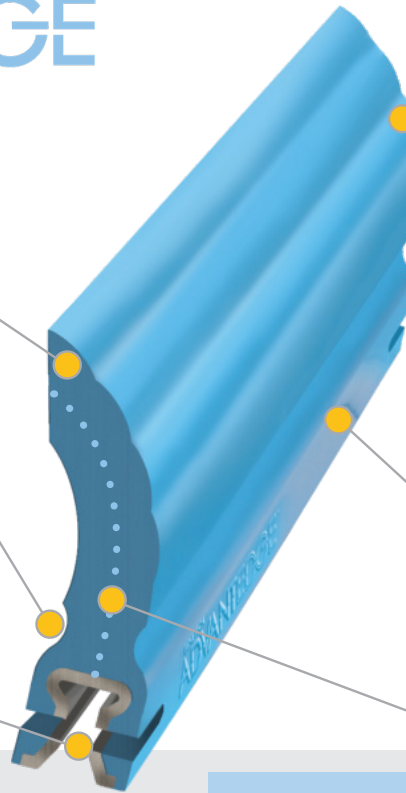
Provides cleaning efficiency and extended wear-life of a metal blade without the disadvantages.

## FLEX ARCS

Provides blade flexibility for better belt contact, higher wear resistances and lower friction.

## RETROFITS TO COMPETITIVE BRANDS

Sizes available to retrofit any major brand cleaner with the benefits of the AdvantEdge blade.



## WAVE PROFILE

Ensures a variable attack angle to prevent tip bull-nosing and smooths out pressure changes from the tensioner.

**Visual Wear Indication:**  
25% / 50% / 75% / 100%.

## WORN OUT BLADE CHECK

When the bubbles are gone, the blade is ready to change out. This patented design uses more of the blade's urethane than any blade on the market.

**Results:** Less waste, less service.

## WEAR LENGTH

Our centerline wear path is longer than the competition.

**Longer life line = Longer life.**

## Retrofit Blades

We use only premium urethane resins along with specific additives to achieve a superior blade product. Our replacement blades are specifically engineered to eliminate carryback by removing debris from the belt surface.

They are field tested and proven to withstand the most severe conveying environments.

## Our AdvantEdge blade system will match any competitors' blades:

- Arch Gordon Saber
- Argonics Raptor
- ASGCO Skalper IV
- Flexco Conshear
- Martin MD QC1
- Martin HD QC1
- Martin Standard QC1
- Martin Pit Viper
- Superior Exterra

Belt Width	BLADE PART NUMBERS*			
in (mm)	Standard	High Temperature	Chemical Resistant	Abrasion Resistant
12 (304)	BAPR1-012-010U1	BAPR1-012-010UH	BAPR1-012-010U3	BAPR1-012-010U5
18 (450)	BAPR1-018-016U1	BAPR1-018-016UH	BAPR1-018-016U3	BAPR1-018-016U5
24 (600)	BAPR1-024-022U1	BAPR1-024-022UH	BAPR1-024-022U3	BAPR1-024-022U5
30 (750)	BAPR1-030-028U1	BAPR1-030-028UH	BAPR1-030-028U3	BAPR1-030-028U5
36 (900)	BAPR1-036-034U1	BAPR1-036-034UH	BAPR1-036-034U3	BAPR1-036-034U5
42 (1050)	BAPR1-042-040U1	BAPR1-042-040UH	BAPR1-042-040U3	BAPR1-042-040U5
48 (1200)	BAPR1-048-046U1	BAPR1-048-046UH	BAPR1-048-046U3	BAPR1-048-046U5
54 (1350)	BAPR1-054-052U1	BAPR1-054-052UH	BAPR1-054-052U3	BAPR1-054-052U5
60 (1500)	BAPR1-060-058U1	BAPR1-060-058UH	BAPR1-060-058U3	BAPR1-060-058U5
66 (1676)	BAPR1-066-064U1	BAPR1-066-064UH	BAPR1-066-064U3	BAPR1-066-064U5
72 (1800)	BAPR1-072-070U1	BAPR1-072-070UH	BAPR1-072-070U3	BAPR1-072-070U5
84 (2133)	BAPR1-084-082U1	BAPR1-084-082UH	BAPR1-084-082U3	BAPR1-084-082U5

\*Standard blade width is belt width -2 in. Also available with belt width -4 in. and -6 in.



+1 (800) 843-2625  
BenetechGlobal.com

©2024 Benetech, Inc. | Issue: 2024-02

