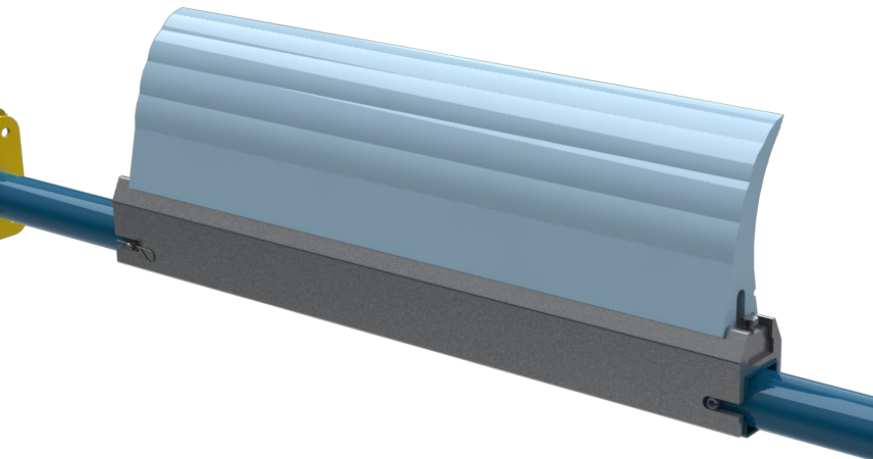
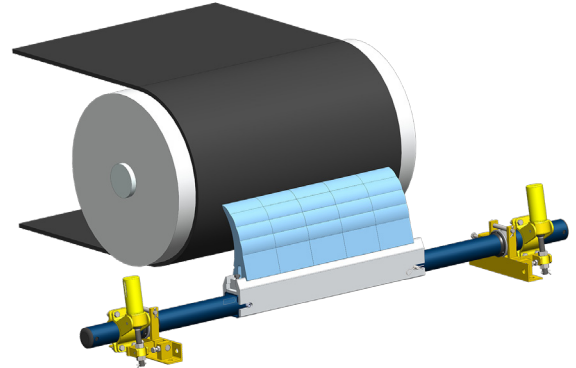


INCREASING BELT CLEANING EFFECTIVENESS

BEP2 Primary Belt Cleaners

Benetech's belt cleaners have incredible flexibility and can adapt to most substances on the belt. Our blade tip stays in constant contact with the belt, increasing the cleaning effectiveness of the blade.

Competitors' flexibility is built into their blades by starting the tip of the blades thinner and getting thicker toward the bottom of the usable blade. Our unique wave profile keeps a sharp edge on the blade throughout the blade's life. As a result, the cleaning edge consistently helps with cleaning efficiency.



BEP2 FEATURES

- Large 6"W x 13"H, heavy-duty urethane
- Belt Speed: 1200 ft./min. maximum
- Tensioner: Spring
- Stays in constant contact with the belt
- Unique wave profile reduces blade-edge bull-nosing and maintains a sharp edge

HEAVY-DUTY, URETHANE BLADES IN 13" HEIGHTS

- Heavy duty abrasion resistant polyurethane blades incorporating Benetech's unique wave profile design
- Blades come in 6-in. widths to work with the contours of the belt for better cleaning performance
- Large blades provide longer wear life reducing replacement costs and extending time between blade change-outs

SIMPLE DUAL SPRING TENSIONER

- Provides consistent force across the width of blades
- Simple adjustment of the spring tensioners brings the blade tension back to optimum pressure for superior cleaning

TWO-PIECE BLADE CARTRIDGES

- Blades can be pre-installed in the cartridge for easy installation on the cleaner
- Cartridge can be quickly and safely removed for blade replacement from either side of cleaner
- Cartridge makes replacing old blades with new blades quick and easy

OPTIMIZED FOR VULCANIZED BELTS

- Focused on high performance in coal-fired power plants, steel mills, aggregate, cement plants, saw mills, pulp mills, mining and more
- Best-in-Class design and technology

