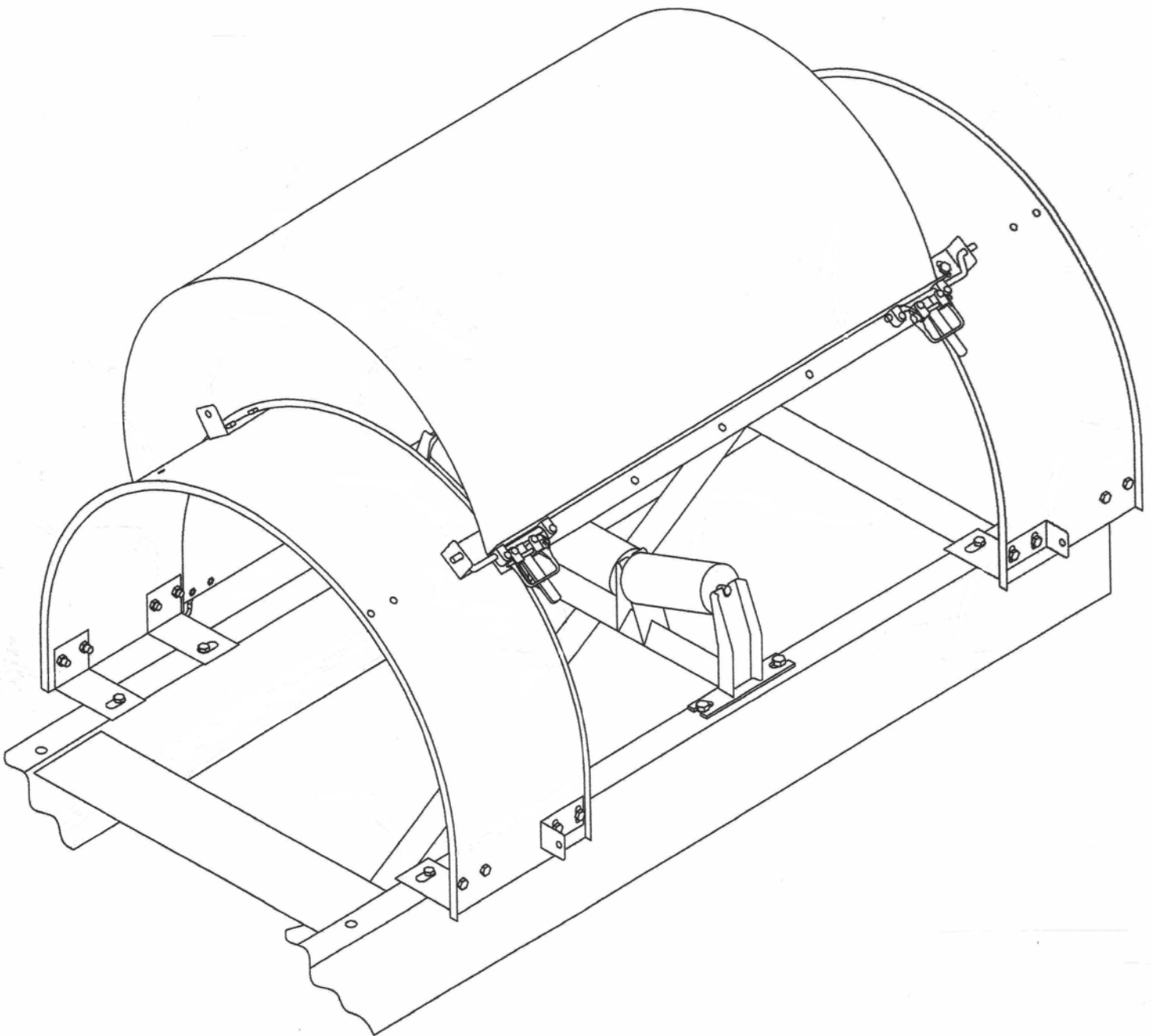


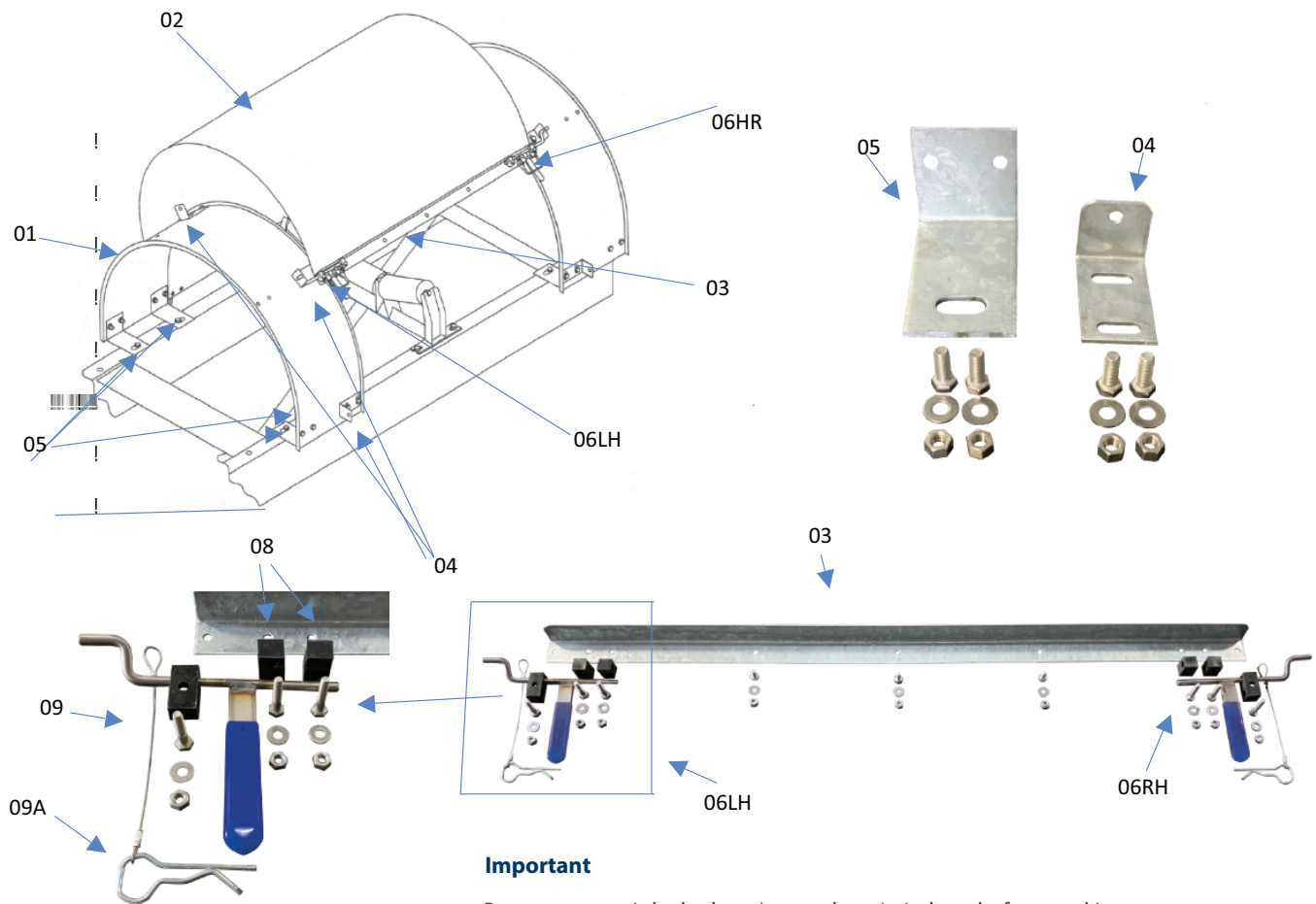
# **BENETECH**<sup>®</sup>

SAFE MATERIAL HANDLING SOLUTIONS

## **Tool-Free Conveyor Belt Covers** Instruction Manual



# Installation Guide



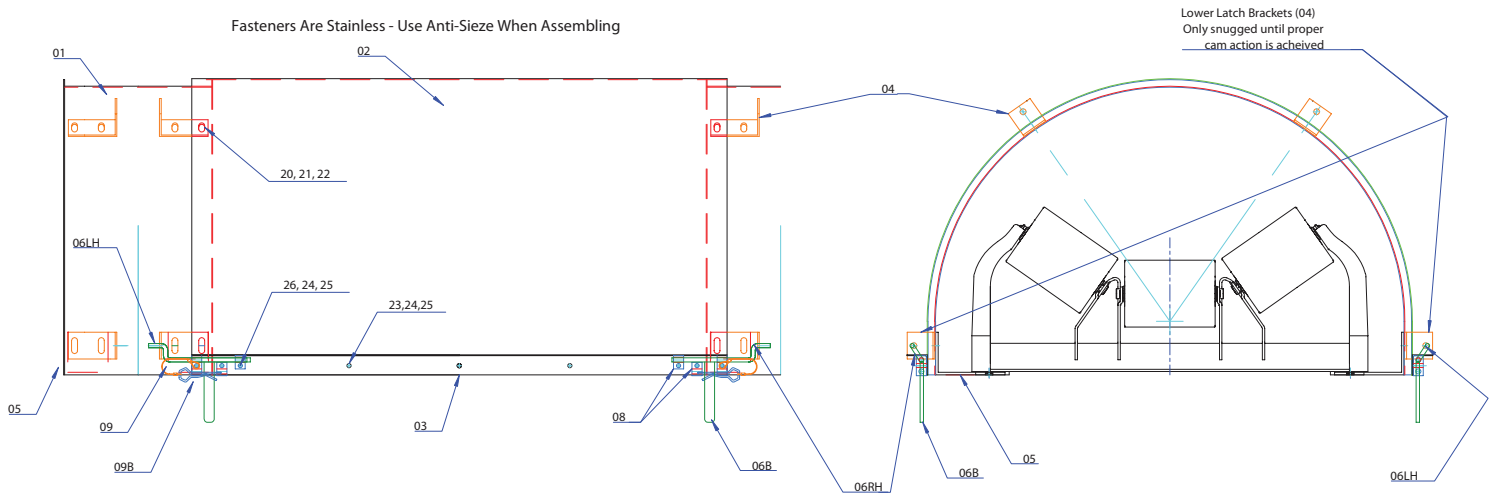
## Important

Be sure system is locked out/ tagged out/ tried out before working on any equipment! All supplied fasteners are stainless. Use anti-seize to prevent the nuts/bolts from seizing together!

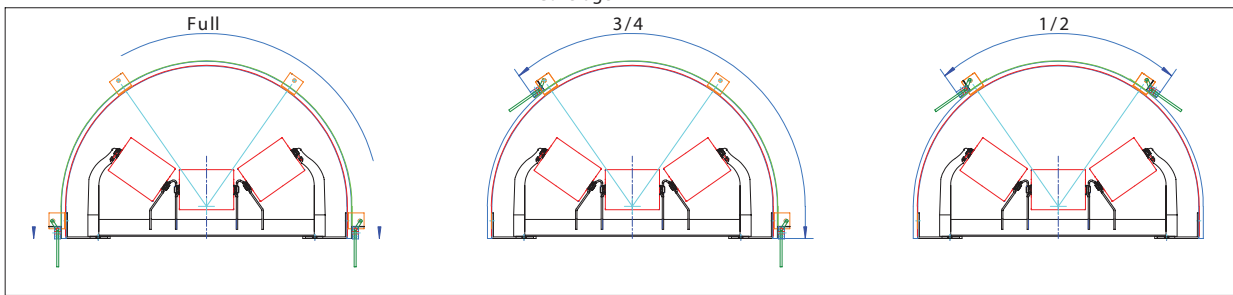
## See the sample hoop and cover for assembly, along with the directions below:

1. Be sure that system is drilled according to the footprints provided. Hoops are mounted on 4ft centers and belt width +9"
2. Attach latch brackets (04), foot brackets (05) to the hoops at the lower end (01) using the supplied 3/8" fasteners, washers mount next to slot on nut location side. Use Anti-seize and snug only in the center position of the slot so that latch brackets (04) may be adjusted during hood install.
3. Attach latch brackets (04) to the hoops at the midpoint (01) using the supplied 3/8" fasteners, washers mount next to slot on nut location side. Use Anti-seize and snug only in the center position of the slot so that latch brackets (04) may be adjusted during hood install.
4. Attach the angles (03) to the cover section (02) using the 3 center holes and the supplied 1/4" fasteners. Use Anti-seize. Bolts go from outside to inside with the washer mount on nut location side.
5. Attach Cam lock (06RH or 06LH). Be sure to use the correct latch (R or L labeled on sleeve). Using outermost hole in angle (03), place retainer cable (09) between angle (03) and HDPE Blocks on Cam latch. Place the block with the beveled edge toward the angle. Use the supplied 1/4" hardware with Anti-Seize. Bolts go from the outside to inside with the washer mount on nut location side.
6. Attach HDPE Blocks (08) to the remaining 2 spots at each end on the angle (03). Bolts go from the outside to inside with the washer mount on nut location side.
7. Tighten all 1/4" hardware connecting the angle (03) to the cover (02).
8. Attach the hoops (01) to the system by the foot brackets (05) at 4 ft. spacing +/- 1/8" and tighten only the bolts that attach the feet (05) to the system.
9. Attach the cover assembly (02) to the hoops (01) by sliding the camlocks (06RH or 06LH) into the appropriate latch bracket (04).
10. Slide the catch brackets (04) to tension the cover to suit. Adjust latch brackets up or down to adjust tension. Tighten ALL bolts. When adjusted properly, covers should be snug when in the locked position. This will ensure a watertight seal.

# Replacement Parts Ordering Guide

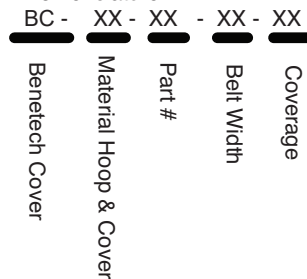


Coverage



Part #	Description	Per 4ft
01	Hoop	1
02	Cover	1
03	Stiffner Angle	2
04	Latch Bracket	8
05	Foot Mount	4
06RH	Cam Latch Right Hand	2
06LH	Cam Latch Left Hand	2
06A	Captured HDPE Block	4
06B	Vinyl Handle Cover	4
08	HDPE Block	8
09	Lanyard	4
09A	Lanyard Cable Clip	8
09B	Cam Lock Clip	4
20	3/8" x 1" SS Bolt	16
21	3/8" SS Nut	16
22	3/8" USS SS Flat	16
23	1/4" x 1/2" SS Bolt	6
24	1/4" SS Nut	18
25	1/4" USS SS Flat	18
26	1/4" x 1-1/4" SS Bolt	12

Nomenclature



Materials

- G - Galvanized
- S - Stainless
- H - HDPE
- P - PolyCarbonate

Coverage

- 10 - Full
- 75 - 3/4
- 50 - 1/2

Example Complete System

BC-GP-XX-24-10 Galvanized, Polycarbonate Cover, Entire Assembly, 24" Belt, Full Coverage

Example Replacement Part

BC-GP-04-24-10 Galvanized, Polycarbonate Cover, Latch Bracket, 24" Belt, Full Coverage

