



Washdown Systems

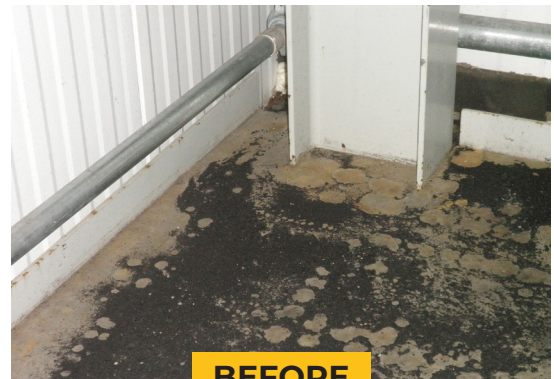
IMPROVES SAFETY & EFFICIENCY

As an industry best practice and helping to avoid an OSHA compliance issue, a scheduled wash down of the material handling area is strongly recommended to remove fine dust buildup.

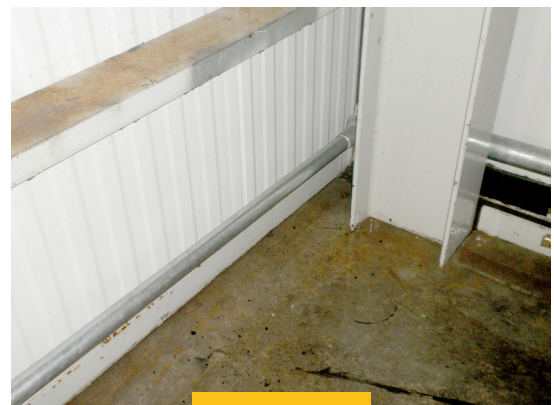
Benetech's Washdown Systems minimize water usage and integrate engineered drainage, curbing, and water shielding. Individual spray heads and nozzle arrangements are positioned strategically to thoroughly clean beam pockets, roof truss, walls, and floors. The entire system is then hydraulically balanced and zoned. Each zone can be manually activated or fully automated through PLC control.

Features & Benefits

- Spray zones controlled manually or fully automated through PLC controls
- Integrated engineered drainage, curbing, and proper water shielding of equipment
- Minimized water usage while maximizing the effectiveness
- Increases plant safety by creating a cleaner work environment
- Reduces risk of fire and explosions
- Substantially lowers housekeeping labor
- Reduces worker injury due to inferior clean-up methods



BEFORE



AFTER

