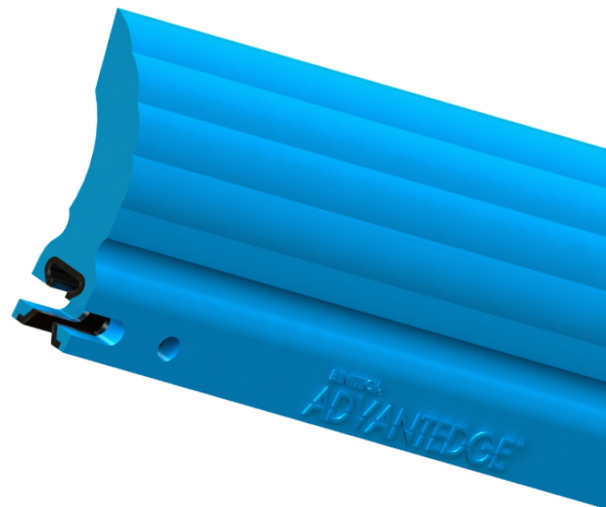


BENETECH ADVANTEDGE

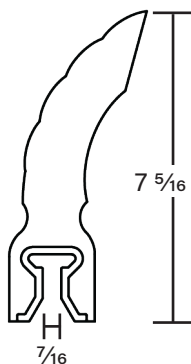
RETROFIT THE COMPETITION

The Benetech AdvantEdge® Blade is engineered for longer life and superior performance, featuring a true centerline wear path that maximizes usable blade material. Available in sizes to retrofit all major brand cleaners—including Martin Engineering®, Flexco®, Arch Environmental®, ASGCO®, and Argonics®—the AdvantEdge gives you a longer wear life and better value, no matter what system you're running.



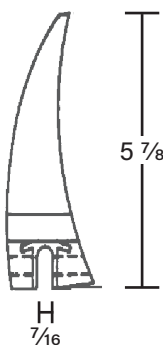
BENETECH®

BENETECH
ADVANTEDGE



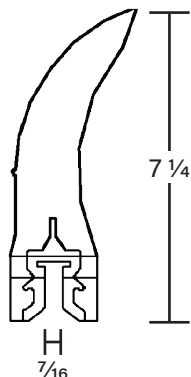
ARCH
ENVIRONMENTAL
EQUIPMENT, INC.

Gordon Saber®



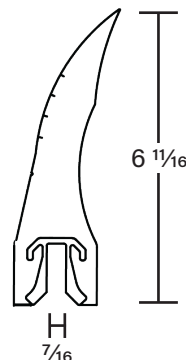
FLEXCO

Conshear™



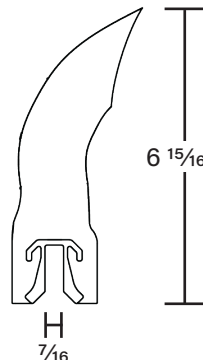
martin
engineering

QC #1



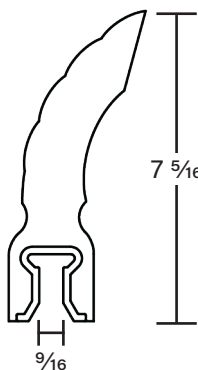
martin
engineering

PitViper



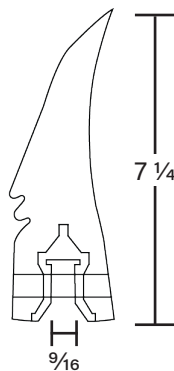
BENETECH®

BENETECH
ADVANTEDGE



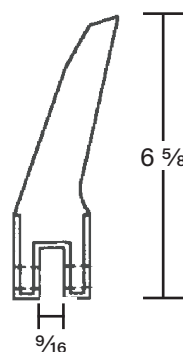
ARGONICS
ENGINEERED POLYURETHANE

Raptor™



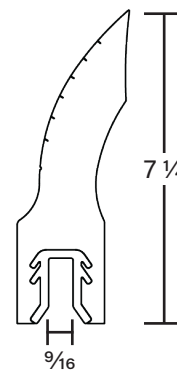
ASGCO

Skalper® IV



martin
engineering

HD QC #1



+1 (800) 843-2625
BenetechGlobal.com