

### HEAVY BULK HANDLING

## Warrior Impact Beds

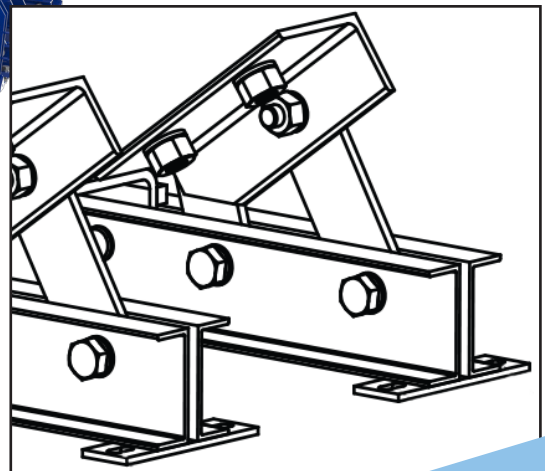
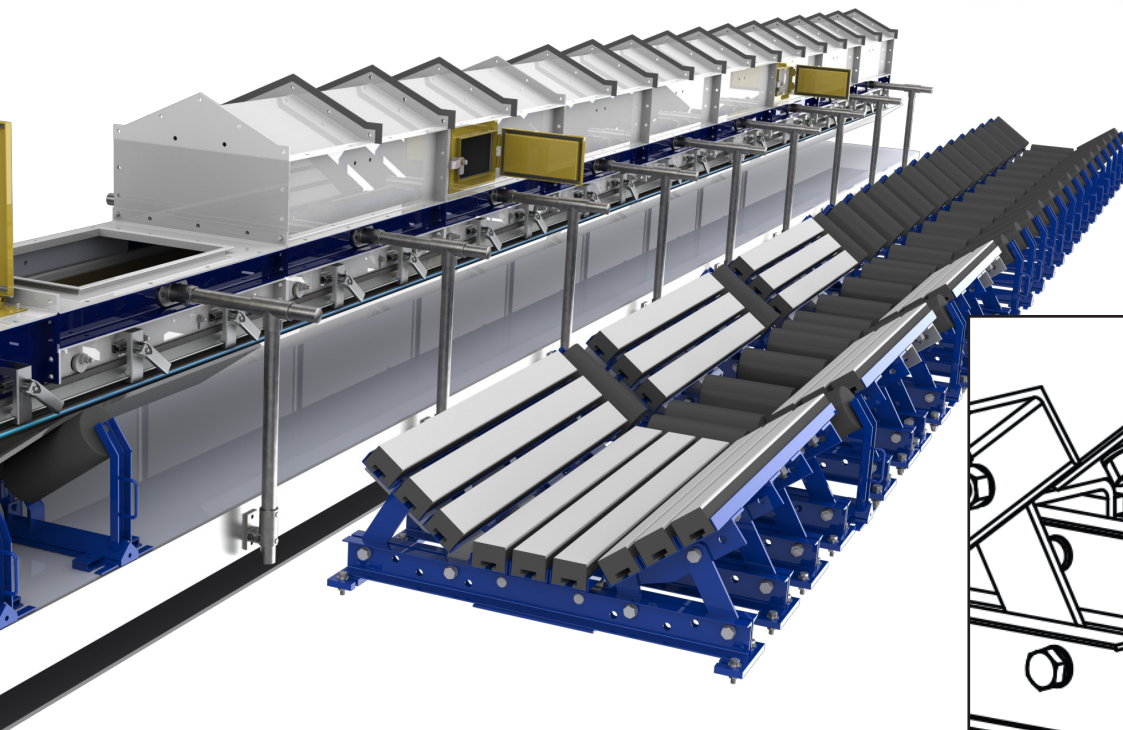
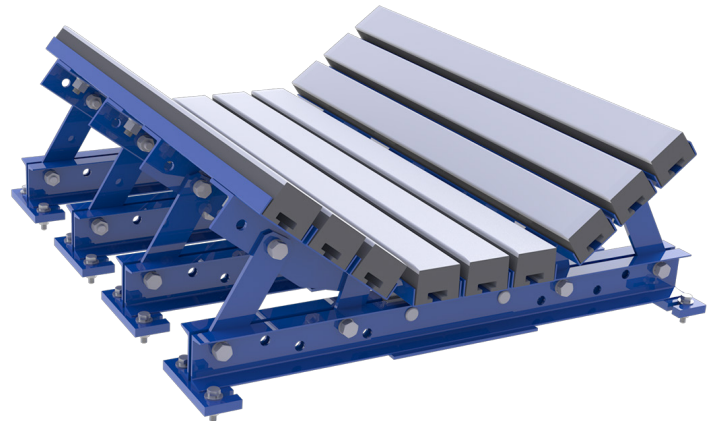
Belt support is a critical component when conveying heavy bulk materials. The Warrior Impact Bed is designed to lie beneath the load zone where the most abusive impact occurs. It cradles the belt and provides stability and shock absorption to prevent spillage and minimize premature belt wear.

### BENEFITS

- Durable steel frame is designed to handle heavy bulk material at the load zone
- Rubber bars with polyurethane top greatly reduce friction with conveyor belt and absorb impact to protect conveyor belt
- Bar change-outs are quick, keeping downtime to a minimum

### FEATURES

- 4-ft sections are standard; other options available
- Troughing angles: adjustable to 20, 35, or 45 degrees
- Meets CEMA design standards

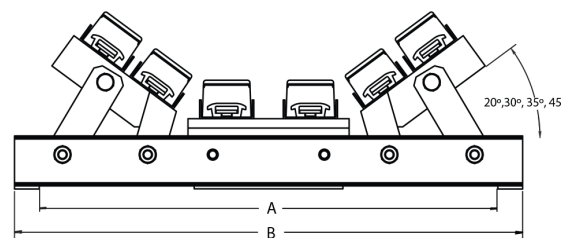


## ORDERING INFORMATION

BELT WIDTH	NUMBER OF BARS	PRODUCT NO.	STANDARD BASE	
			B (mm)	A (mm)
24" (500-650)	6	BIBT0024D1W0	36 (914)	33 (838)
30" (650-800)	6	BIBT0030D1W0	42 (1066)	39 (991)
36" (800-1000)	9	BIBT0036D1W0	48 (1219)	45 (1143)
42" (1000-1200)	9	BIBT0042D1W0	54 (1317)	51 (1295)
48" (1200-1400)	9	BIBT0048D1W0	60 (1529)	57 (1448)
54" (1400-1600)	9	BIBT0054D1W0	66 (1676)	63 (1600)
60" (1600-1800)	12	BIBT0060D1W0	72 (1829)	69 (1752)
72" (1800-2000)	15	BIBT0072D1W0	84 (2133)	81 (2057)

It is important to ensure that adequate power is available in the conveyor drive to compensate for additional frictional drag when installing one or more Warrior Impact Beds.

The bars of the Warrior Impact Bed are set below the unloaded belt's line of travel in the center of the bed. This ensures that the belt will absorb impact without continuous friction and wear if the belt is running empty. The wing bars on the sides of the cradle are installed in line with the idlers to allow effective sealing of the transfer point.



### Standard Base Stringer Width

Belt Width plus 12 in. (305 mm)

### Mounting Center Width

Belt Width plus 9 in. (229 mm).

## Warrior Impact Bars

### CHARACTERISTICS

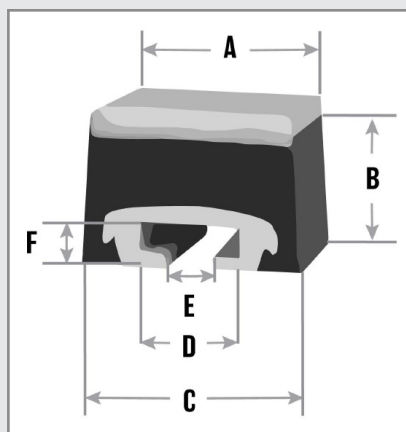
- Coefficient of Friction: 0.5
- Service Temperature Range:  
-20° to 140° F (-29° to 60° C)

### CONSTRUCTION

- Fasteners: T-Bolts
- T-Slot: Aluminum
- Bearing Layer: UHMW Polyurethane
- Absorption Layer: 50-Durometer SBR Rubber

### CHEMICAL EXPOSURE

- Warrior Impact Bars can be used with most industrial chemicals



48-INCH BAR	
A	3.75" (95mm)
B	2.95" (75mm)
C	3.93" (100mm)
D	1.81" (46mm)
E	.86" (22mm)
F	.86" (22mm)

### WARRIOR IMPACT BAR \*

Product Number	BBSICB-A1-4
----------------	-------------

\* Part Number is for 48" (1220mm) bar. Custom lengths are available.



+1 (800) 843-2625  
BenetechGlobal.com