

BENETECH. **MaxZone™**

Warrior Roll & Guide Support Bed

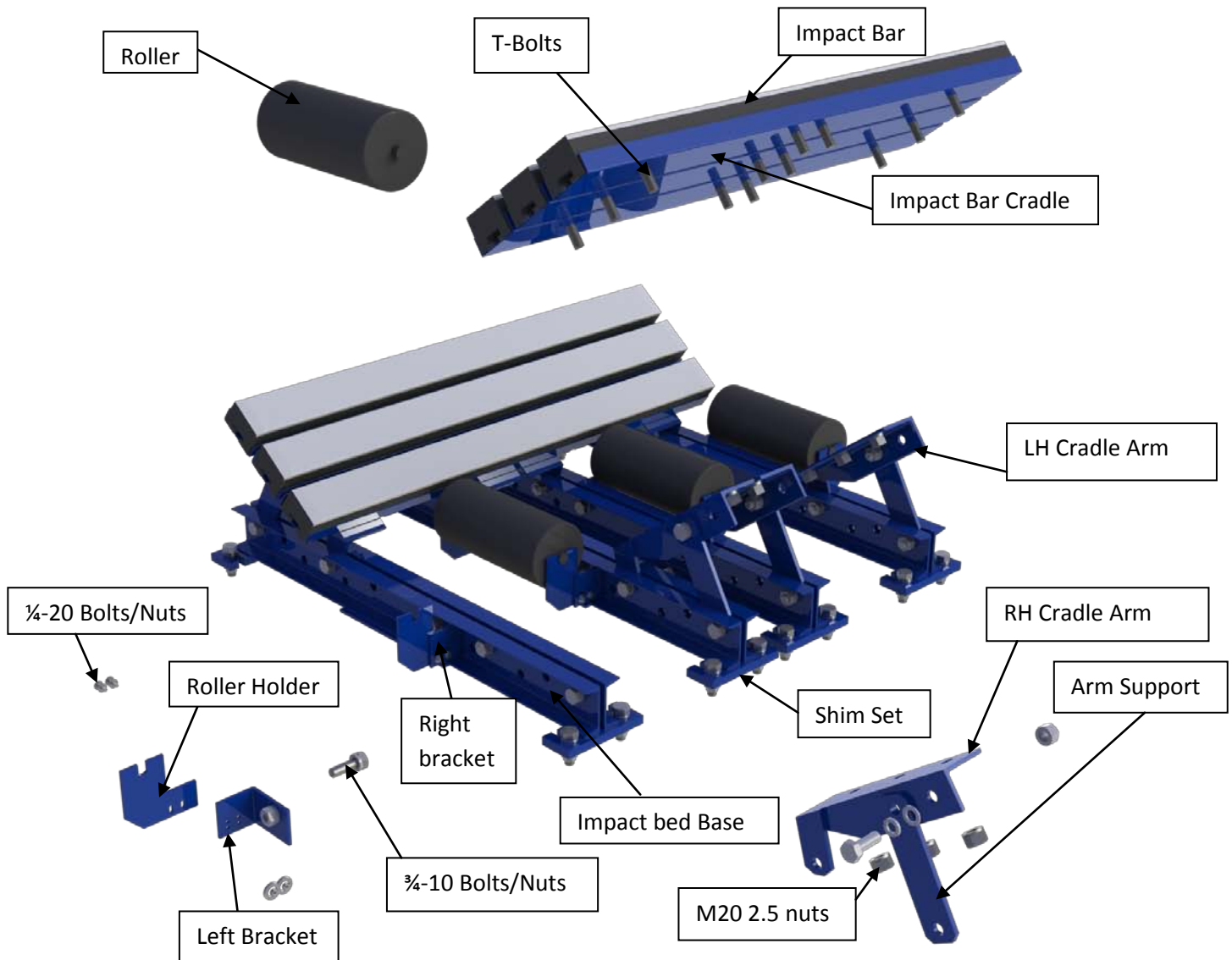
Installation Guide



Table of Contents

Provided Components.....	3
Pre-Install Safety.....	4
Installation Overview.....	5
Installation Instructions.....	6-9
Trough settings.....	10-12
Impact Bar Replacement.....	13-14

Provided Components



Re-ordering Information for wear components	
Part Description	Part Number
Impact Bar (1 Rubber/UHMW Bar)	BBSICB-A1-4
T-Bolt (1 T-Bolt with spring lock washer)	BIB-TB0

Before Installing the Warrior Roll & Guide Support Bed

1. Inspect ALL shipping containers for damage and correct number of items (skids, pallets, cartons, boxes, etc.) being delivered. Report damage and/or shortages to delivery service immediately and fill out delivery service's claim form. Keep ALL damaged goods for examination. Benetech Inc is NOT responsible for damage occurring during transit.
2. All Benetech Inc. Warrior Roll & Guide Beds are shipped from our facilities assembled. Care should be taken while disassembling the units to ensure no parts are lost or damaged as the equipment is moved to its desired location. Dispose of shipping containers in an approved manner.
3. If any items are missing, IMMEDIATELY contact BENETECH, INC. or an authorized representative.
4. Gather tools. Minimum tools required for installation are:
 - Tape measure/ String
 - Torch/Hole Saw
 - Level/Straight Edge
 - Welder/Drill
 - Open/Box End Wrenches
 - Socket Set
 - Marker/Soapstone (Welders chalk)
5. If using a cutting torch or welding, test atmosphere for gas level or dust content. Cover conveyor belt with fire retardant cover. Verify locations of fire extinguishers and operational water hoses prior to begin cutting/welding operations.



! WARNING !

Before installing equipment, turn off AND lock out/tag out all energy sources to the conveyor and conveyor accessories according to ANSI standards and local plant regulations. Failure to do so could result in serious injury or death.

If equipment will be installed in an enclosed area, the atmosphere in the structure/area must be tested for gas levels and dust content levels before using a cutting torch, welding equipment, grinding equipment or electric powered tools. Using a cutting torch, welding, drilling or grinding in an area with gas or dust may cause an explosion.

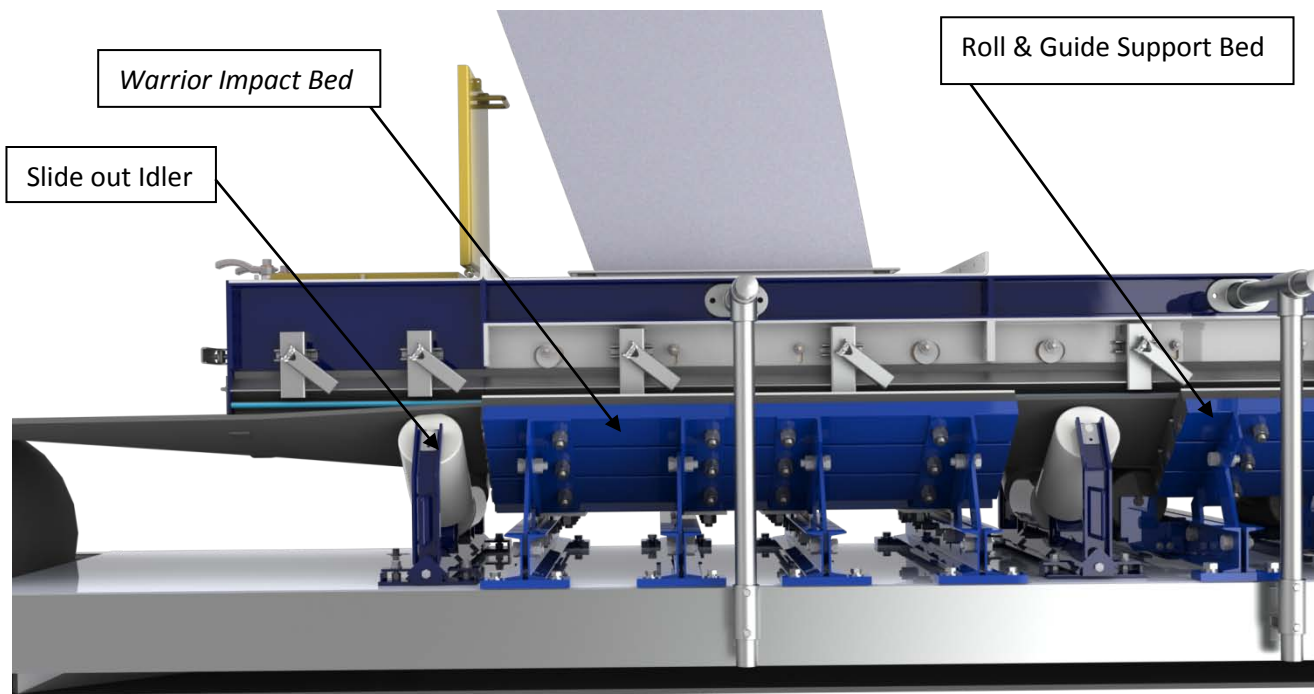
Installation Overview

Belt support is a critical component when conveying heavy bulk materials. The Benetech *Warrior Roll & Guide Bed* is designed to sit beneath conveyor belts just after loading points where the discharge impact is most abusive. It cradles the belt and provides stability and shock absorption to prevent spillage and pre-mature belt wear.

The *Warrior Roll & Guide Bed* should be placed after the Warrior Impact bed, to help support and guide the belt after the initial discharge. If more than one loading point exists, *Warrior Roll & Guide Beds* will be needed after each one, following the Warrior Impact types.

Each *Warrior Roll & Guide bed* should be **led** and **followed** by a Benetech Slide out Idler before continuing standard troughing idler arrangement. These components are necessary for optimum performance.

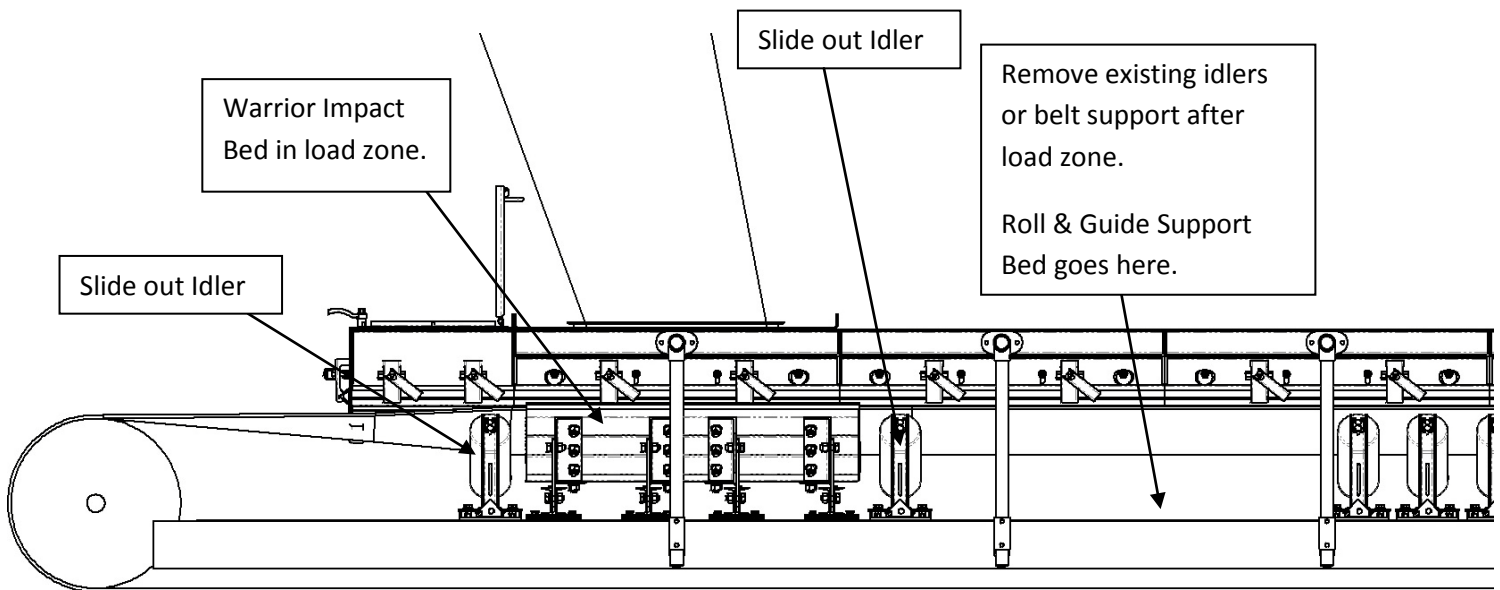
IMPORTANT: Benetech Inc.'s belt support products should only be used alongside Benetech troughing idlers. If idlers from other manufacturers are used, there is a risk that the belt will sit lower causing contact and high friction with the Impact/Roller beds.



Installation Instructions

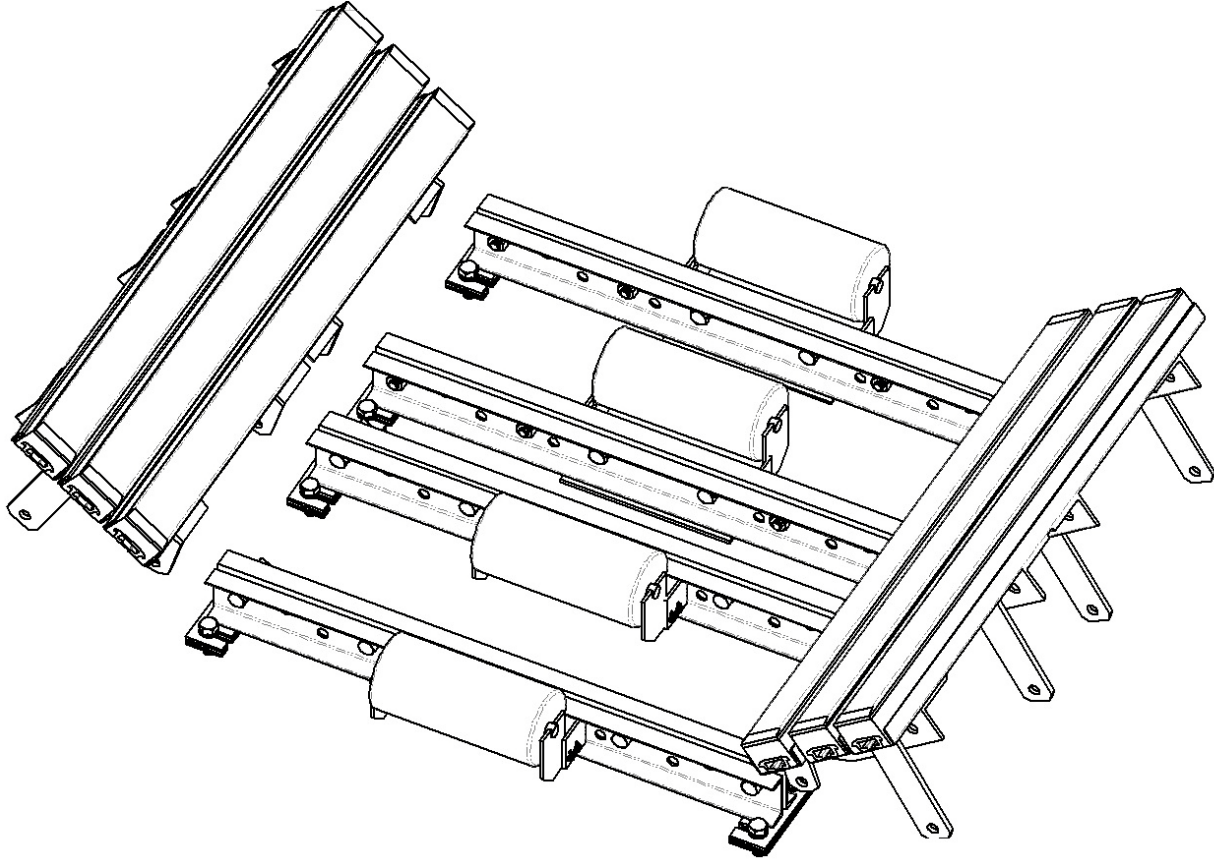
Step 1. Hose down the work area prior to commencing any deconstruction. Use this time to inspect the stringer and decking where the new parts are to be installed. If the stringer or support system show signs of corrosion, it may be necessary to replace these structural parts before installing your Benetech belt support components.

Step 2. After initial load zone support has been installed, remove the next set of existing idlers or belt support. Remove only as many as are needed to install the *Warrior Roll & Guide Bed*.

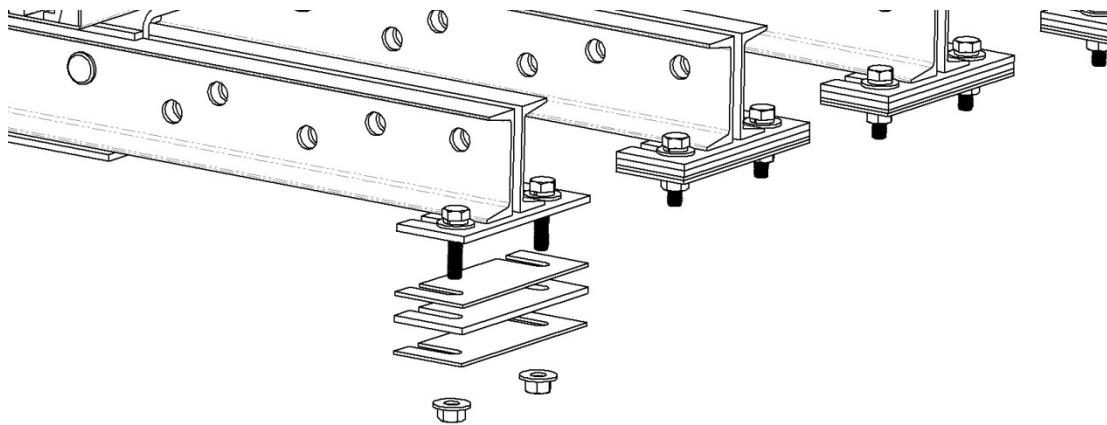


Step 3. For ease of installation, removal of the trough bars is recommended. This can be done by unbolting the lower bolts on each set of support arms. See picture below.

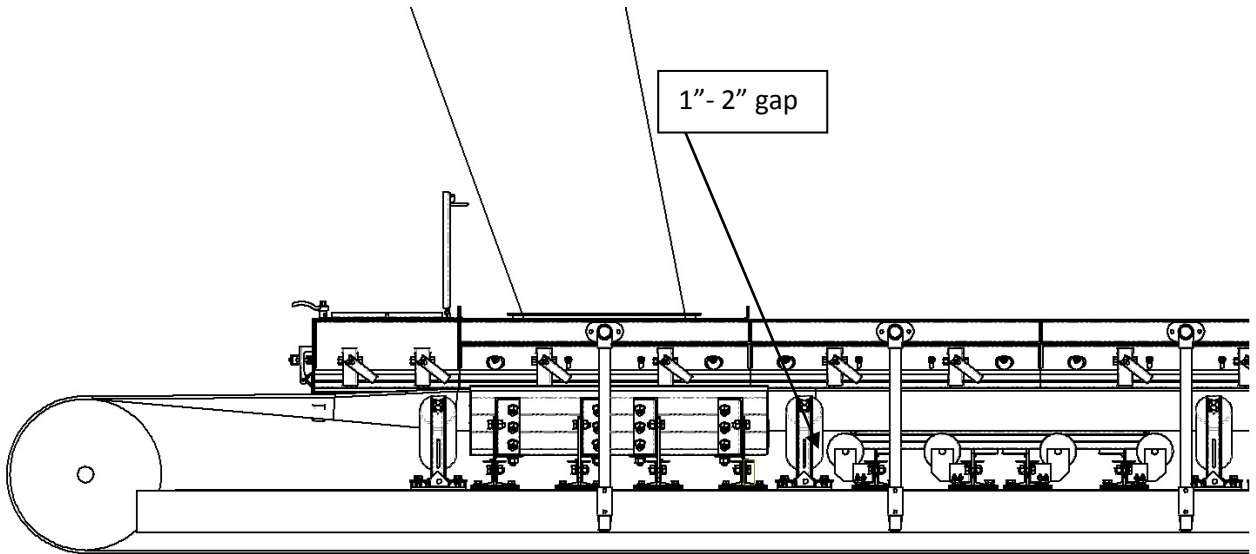
IMPORTANT: Even without the trough bars attached, the center assembly sections will be heavy. Use caution when lifting and moving these parts



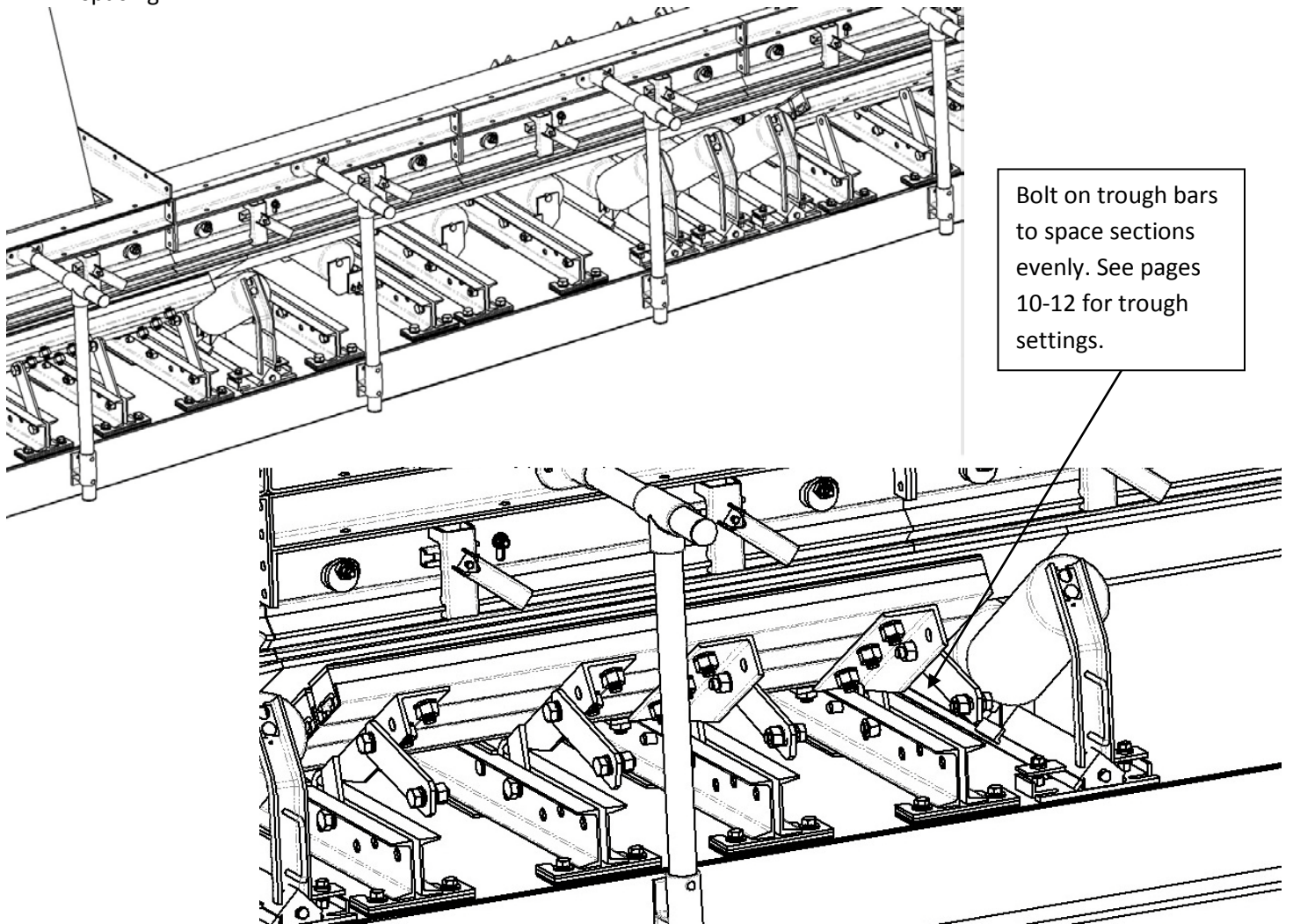
Step 4. A shim kit is supplied with each *Warrior Roll & Guide Bed*. If the roll diameter of the idlers being used is 5", the shims should be left off. If the roll diameter is 6", the shims must be installed.



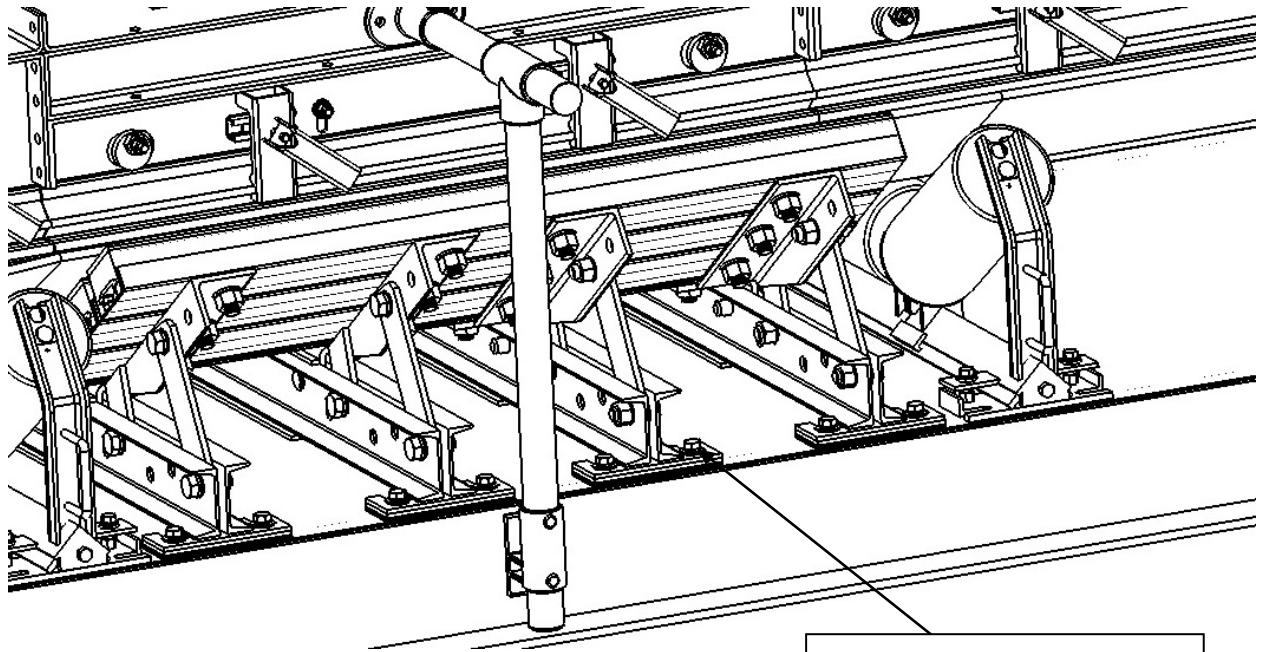
Step 5. Center and square the base sections of the *Warrior Roll & Guide Bed* on the stringer channels. The idler rolls should be 1" - 2" from the end of the impact bed to the tangent roll surface.



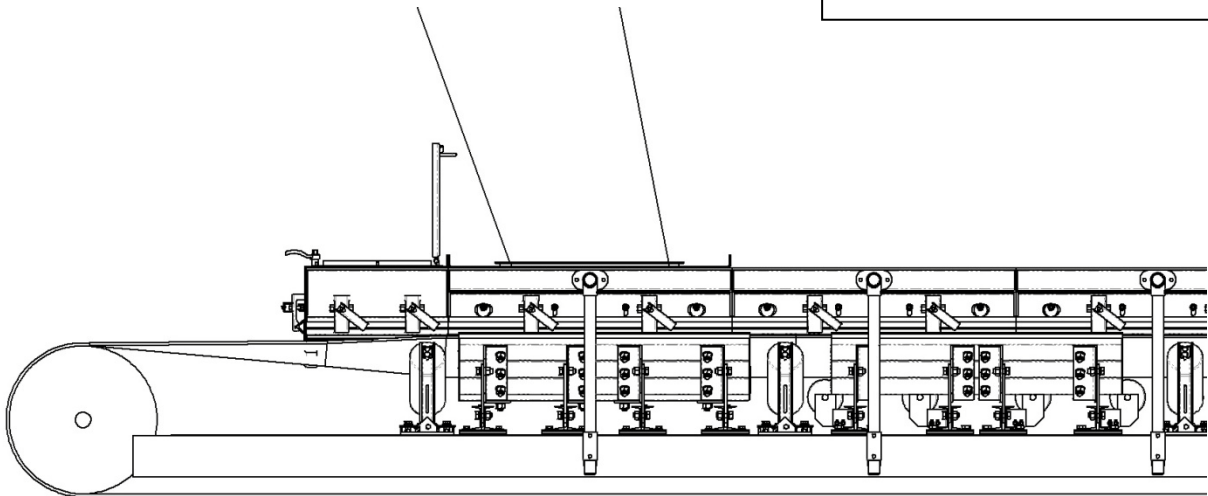
Step 6. Space the Roll & Guide center sections evenly apart. Re-attach trough arms to ensure proper spacing.



Step 7. Install trough bar assemblies into place, then bolt entire assembly down using the bed and idlers as a guide.



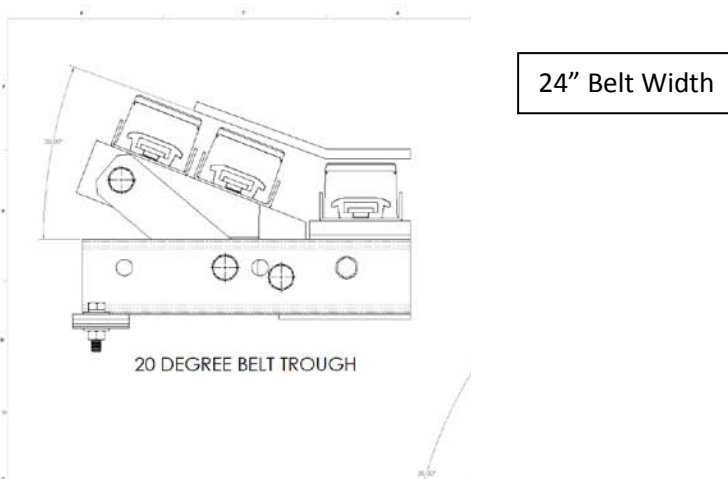
Bolt assembly down using the mounting plates as guides.

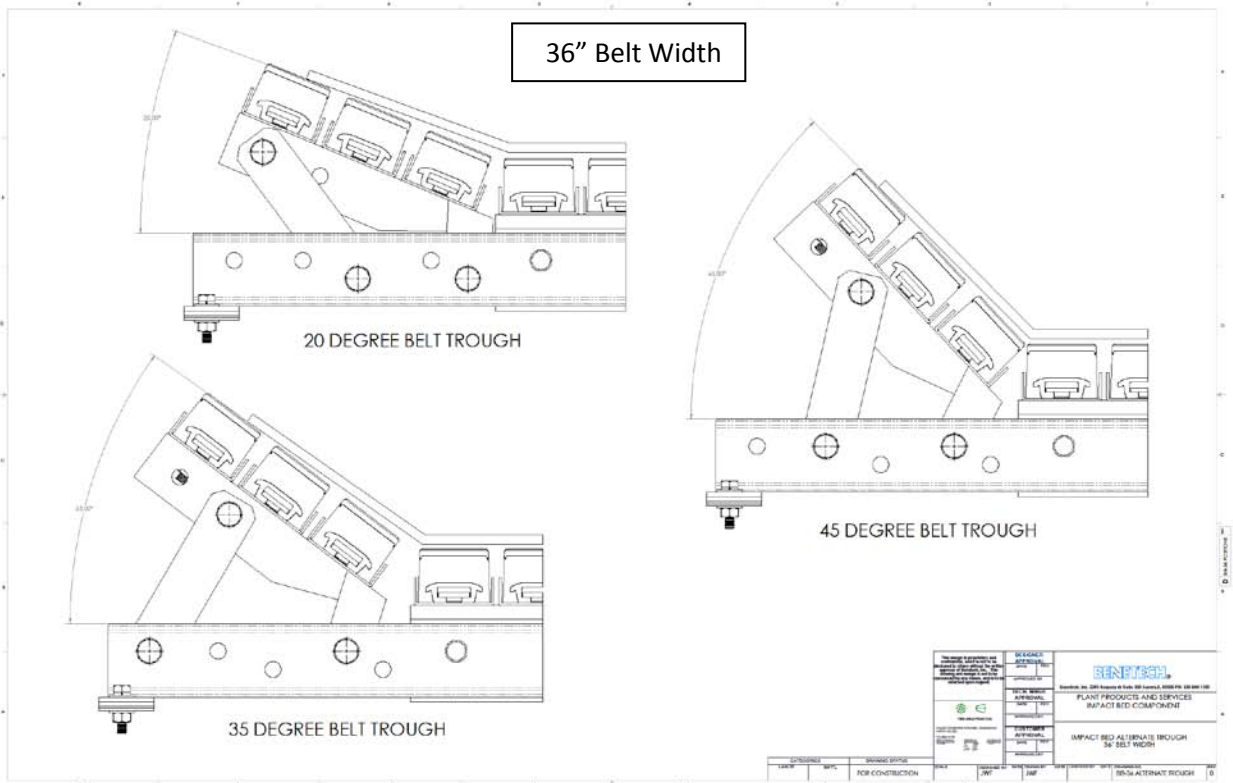
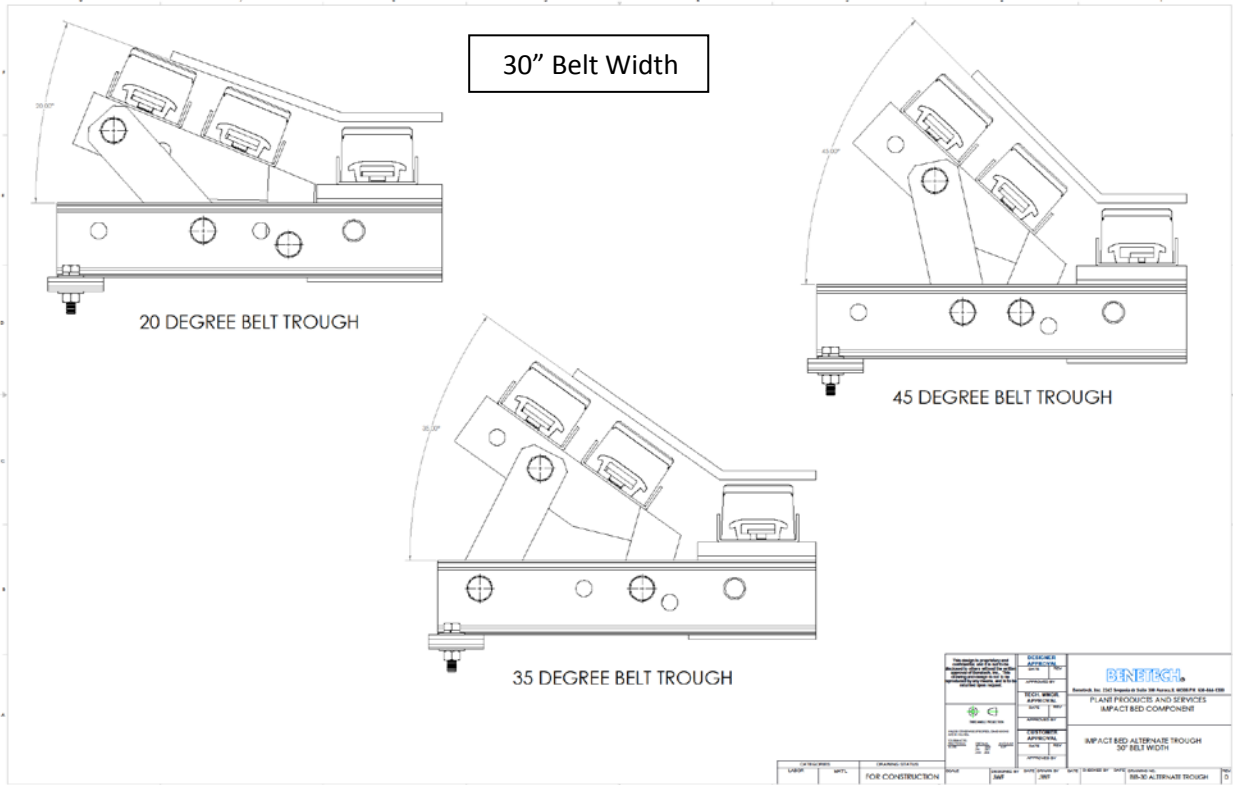


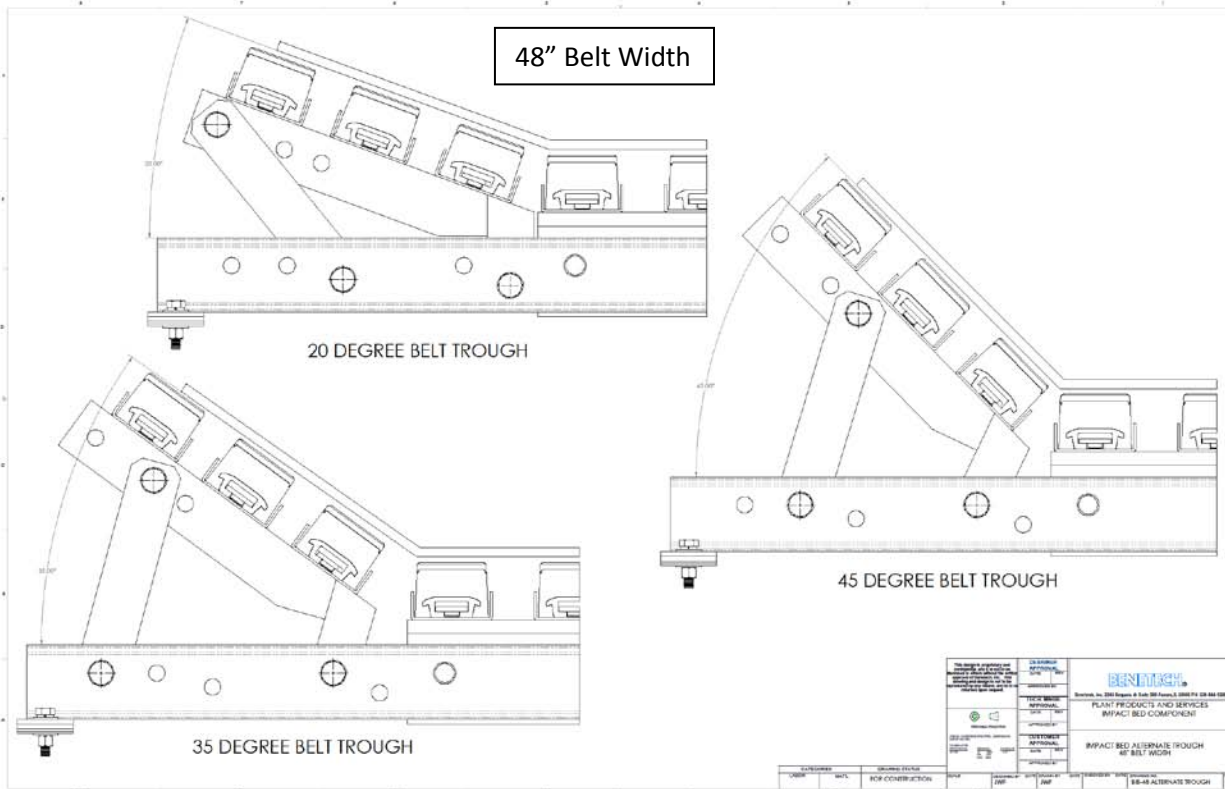
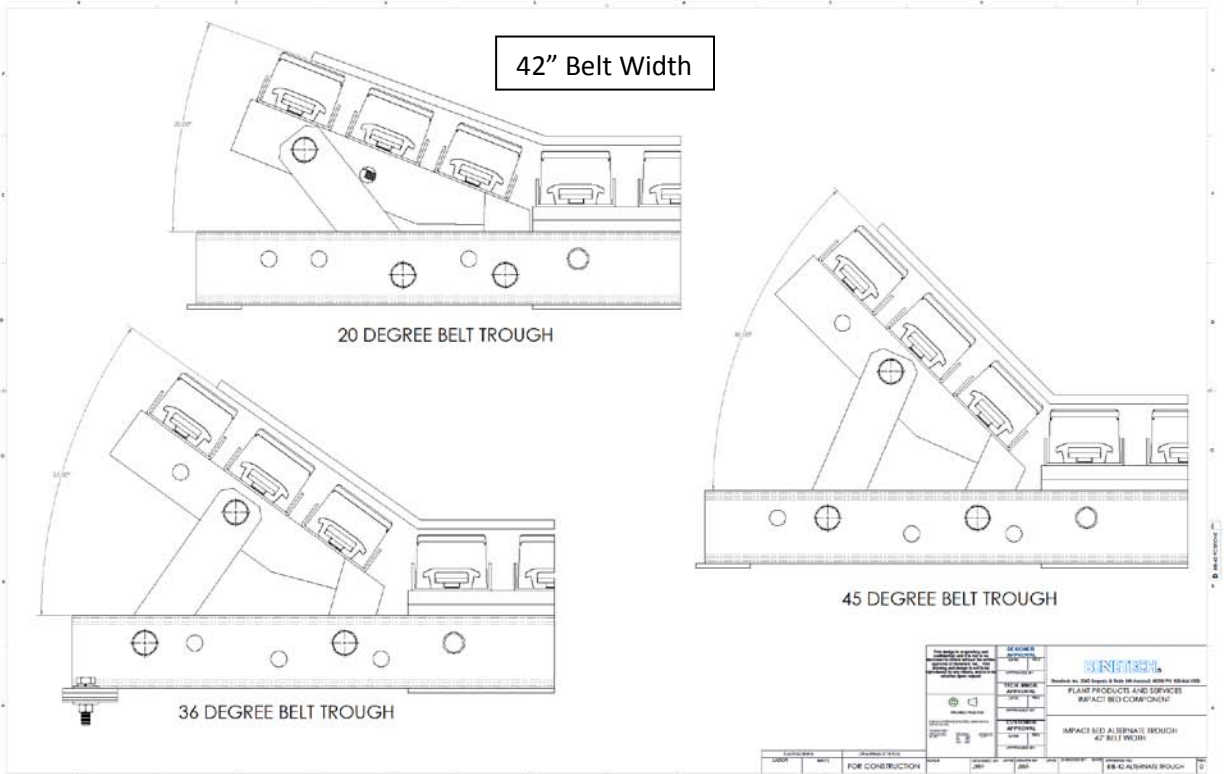
Trough Settings

Benetech's line of belt support beds are all trough adjustable. Regardless of belt width, it is possible for each unit to be re-positioned to fit 20, 35, or 45 degree trough angles.

Refer to the guides listed on the following pages to determine the correct position to mount your units.







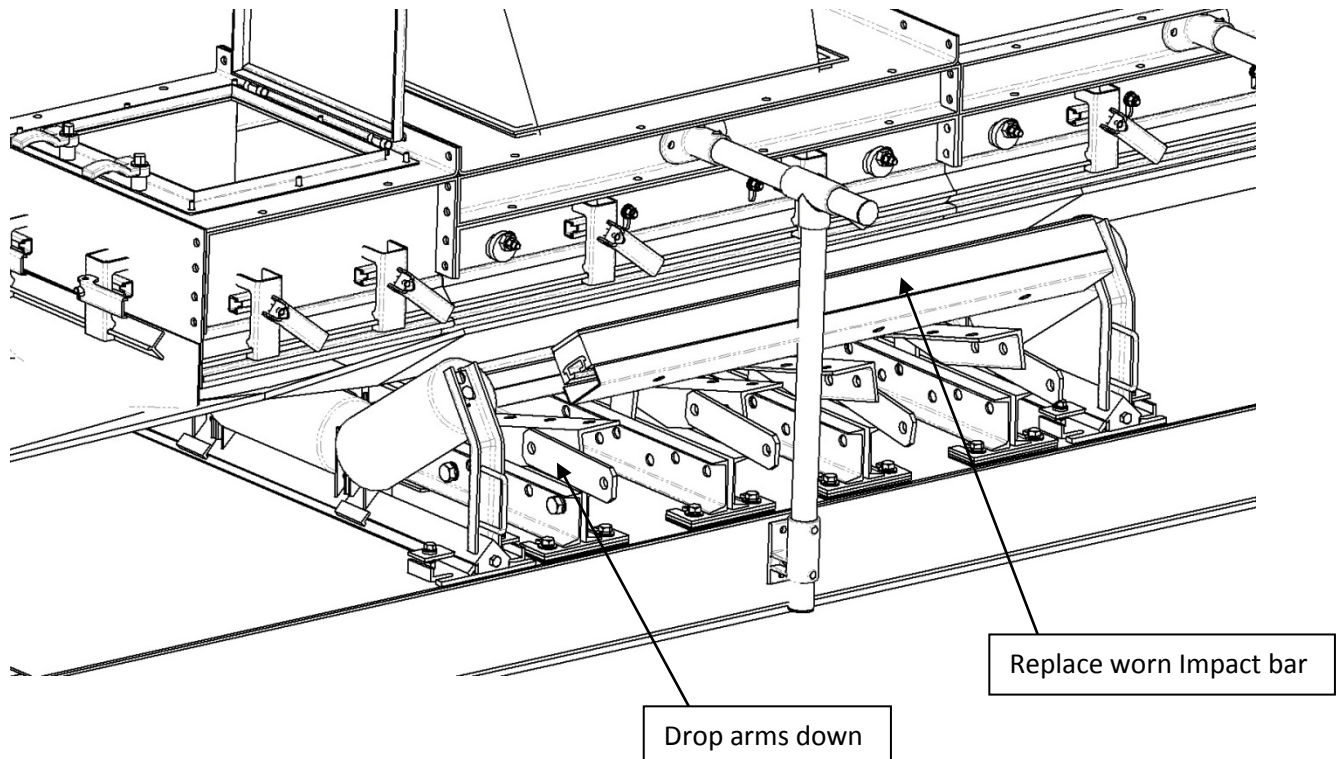
Impact Bar Replacement

This process is the same for both *Warrior Impact Beds* and *Warrior Roll & Guide Beds*.

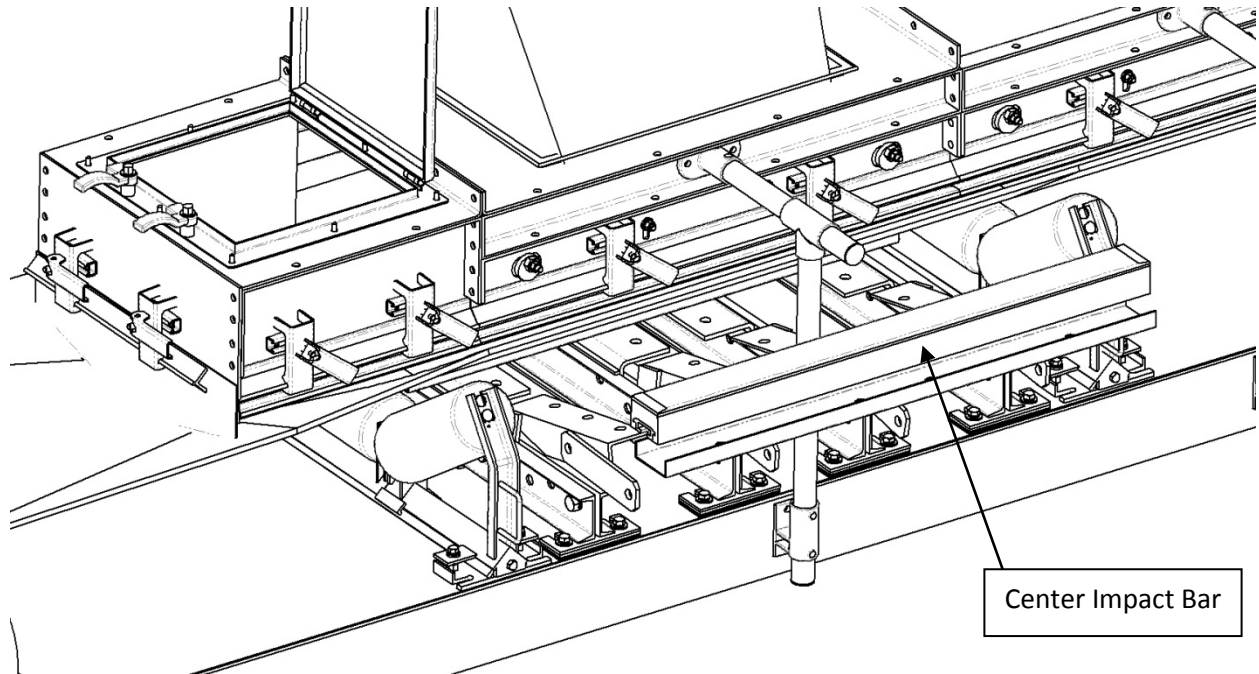
Periodic visual checks should be made once the Benetech belt support products are in use. Operators should check for loosening hardware and impact bar wear. The center bars on the *Warrior Impact Bed* are likely to face higher friction than the bars on the side, and therefore are more likely to show wear. However, the material used on top of the bars can be expected to last at least 12 months before requiring replacement.

For replacement bars, contact BENETECH, INC. or an authorized representative. See page 3 for part number information.

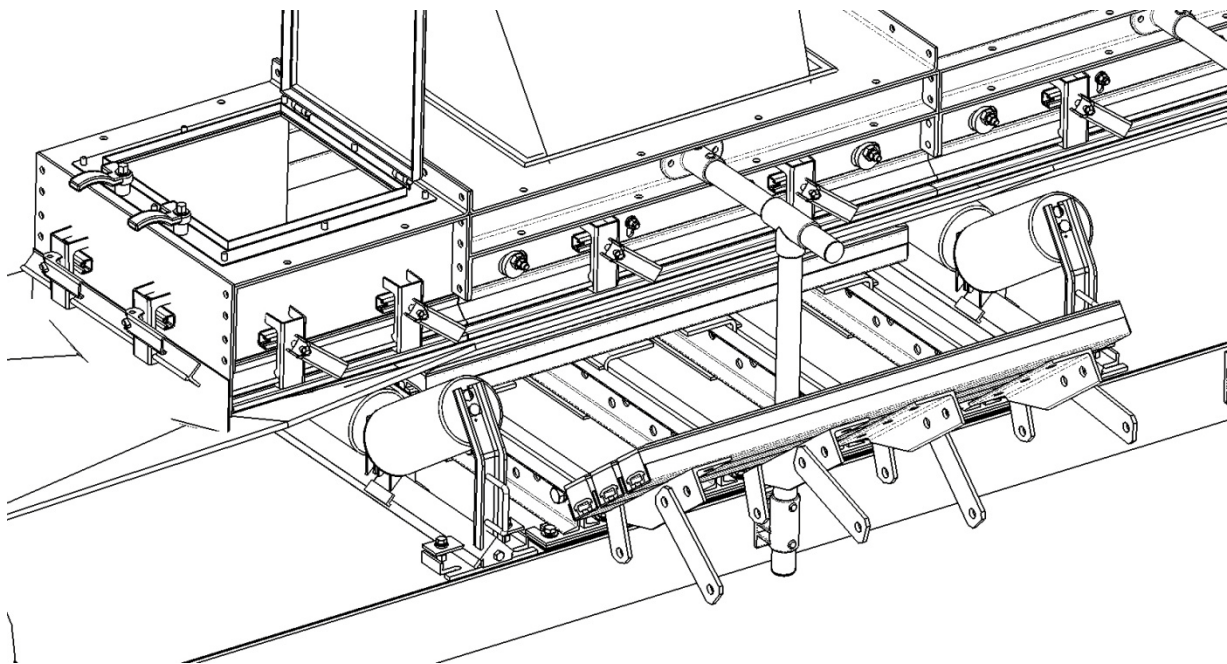
To replace the troughing bars, simply unbolt and drop the arms down. At this point it's possible to remove the worn troughing impact bars.



To replace the center bars, or rollers, remove the side bars as described above, then unbolt and remove the center components.



Alternatively, the side arms can be removed with the bars still attached.



Benetech, Inc
2245 Sequoia Drive
Suite 300
Aurora, IL 60506

P: 630-844-1300
F: 630-844-8690
www.benetechusa.com