

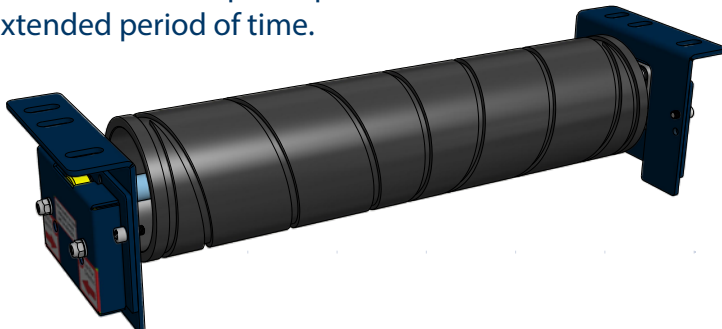
Benetech Reversible Tracker

Belt Centralizing Return Pulley

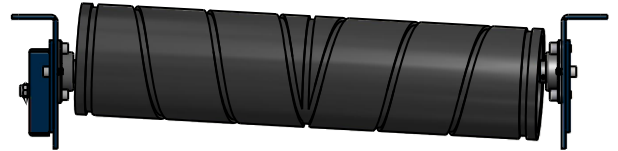
Reversible conveyors pose a significant challenge in terms of belt misalignment. Unlike uni-directional belts, where it is possible to achieve some belt misalignment correction through the adjustment of pulley and frames, reversible belts cannot be corrected as any adjustments made to correct misalignment in the forward direction become the very problem in areas the belt is reversed. Benetech has developed the Reversible Tracker to address this issue.

Building on the knowledge and function of the return idler we have produced a belt tracking return roller that delivers exceptional performance for reversible belts. We achieve this by pivoting the shaft in the direction of belt travel. The unit comes with a unique bracket and inspection cover that allows one to see that the shaft has rotated in line with belt direction and allows for adjustment of the roller to ensure optimal contact pressure between belt and Reversible Tracker.

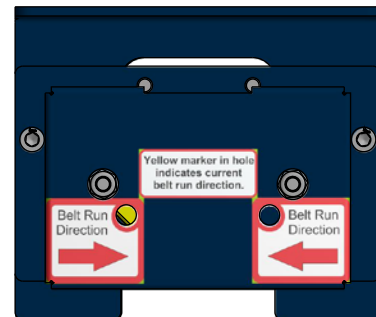
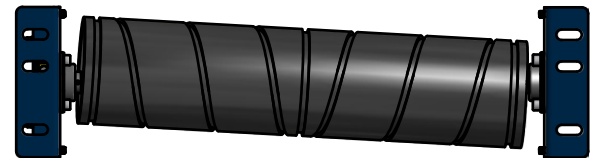
The Reversible Tracker is unique and responds instantly to even the smallest amount of belt misalignment. High precision component and quality materials ensure the you have a belt tracking products that will deliver superior performance over an extended period of time.



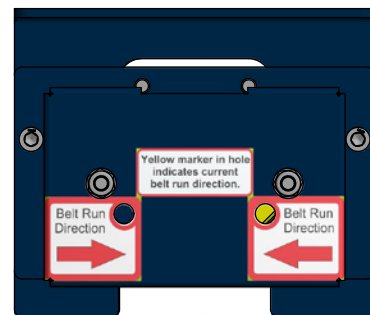
Side View



Aerial View



Yellow marker in hole indicates current belt run direction.



Unique Operational Features and Benefits

Quick and Easy Installation - The Benetech Reversible Tracker Return has been designed to fit into SABS1313, CEMA and DIN conveyor systems.

Uncomplicated Setup and Adjustment - Rollers can be easily adjusted within existing frames to ensure maximum conveyor belt performance, using the pre-fitted brackets on the Benetech Reversible Tracker.

Customized Sizes - Special design requirements, such as specific shaft dimensions and lengths, can be manufactured at little or no additional charge.

Designed to Last - Special hardened steels and precision machining are used to manufacture the rollers inner components and ensure a well sealed bearing unit. Coupled with corrosion and wear resistant materials, the Benetech Reversible Tracker is designed to be durable and effective, even under extreme conditions.

Contributes to Conveyor Belt Life Span - Correctly installed, the Benetech Reversible Tracker will instantly correct belt misalignment on the return side of the belt, thus preventing belt edge damage and structural damage from occurring.

Cost Effective Operations - Benetech Reversible Trackers will decrease downtime and maintenance and are designed to ensure absolute peace of mind. Reliable access to replacement products and expert advice means that your conveyor belt system can perform optimally with little maintenance.

Business and Operational Confidence - Competitive pricing and high levels of service ensure that personnel commissioned to manage a conveyor belt system can access products and advice when they really need it. All Benetech products are supplied with a 1-year warranty.

PRODUCT SPECIFICATIONS

30 Series

Shaft and Roller Sizes

- 30 Series : Shaft Ø30mm – Roller Ø168mm
- 40 Series: Shaft Ø40mm – Roller Ø210mm
- 50 Series: Shaft Ø50mm – Roller Ø235mm

40 Series

Materials

- C.N.C components
- Deep groove ball bearings / Taper Bearings
- Rubber / Urethane Lagging

50 Series

Operational Conditions

- Reversible conveyor belts
- 1.5 m/sec – 6 m/sec
- Belt widths – 450mm to 2600mm
- Operational loads – 215 kg to 780 kg
- Operational temperatures -40°C to +80 °C
- Recommended spacing along conveyor belt between 40 m to 50 m
- Suitable for all materials

Contact a Benetech representative for more information.

BENETECH[®]

Benetech
2245 Sequoia Dr., Ste. 300
Aurora, IL 60506

+1.630.844.1300
info@benetechusa.com
www.benetechglobal.com