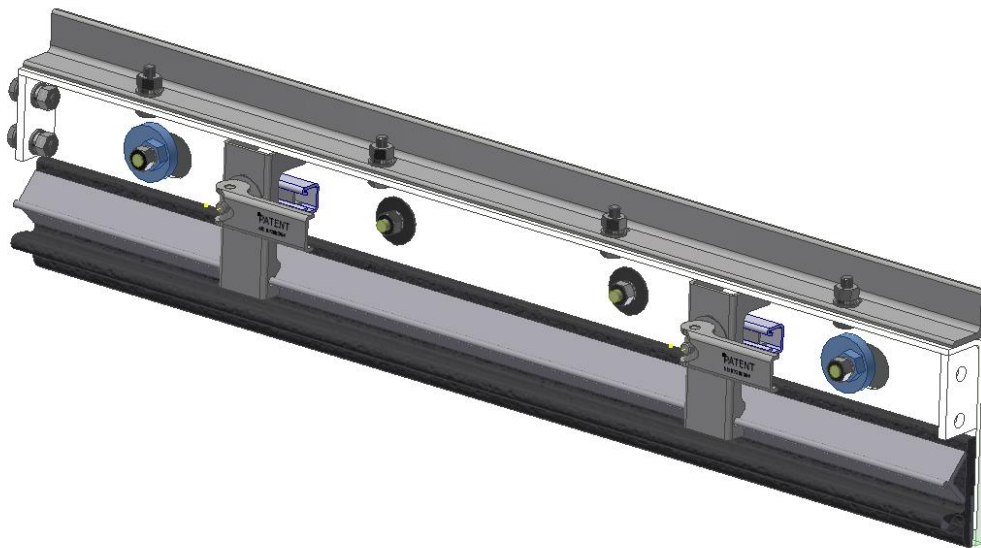




XN Wear Liner

Installation Guide



! IMPORTANT !**BENETECH, INC. HEREBY DISCLAIMS ANY LIABILITY FOR, BUT NOT LIMITED TO:**

- IMPROPER INSTALLATION OF EQUIPMENT
- IMPROPER SIZING OF EQUIPMENT
- DAMAGE DUE TO CONTAMINATION OF MATERIAL
- USER'S FAILURE TO INSPECT EQUIPMENT
- USER'S FAILURE TO MAINTAIN EQUIPMENT
- USER'S FAILURE TO TAKE REASONABLE CARE OF THE EQUIPMENT
- INJURIES OR DAMAGE RESULTING FROM USE OR APPLICATION OF THIS PRODUCT CONTRARY TO INSTRUCTIONS AND SPECIFICATIONS CONTAINED HEREIN.

BENETECH, INC.'S LIABILITY SHALL BE LIMITED TO REPAIR OR REPLACEMENT OF EQUIPMENT SHOWN TO BE DEFECTIVE.**! SAFETY !**

Review and understand all safety rules given herein along with local and Governmental standards and regulations. Know and understand the American National Standards Institute (ANSI) z244.1-1982 lockout/tagout procedures, the American National Standard for Personnel Protection - Lockout/Tagout of Energy Sources - Minimum Safety Requirements and the Occupational Safety and Health Administration (OSHA) Federal Register, Part IV, 29 CFR Part 1910, Control of Hazardous Energy Source (Lockout/Tagout); Final Rule. Also observe all local and Governmental regulations concerning entry into confined spaces, welding, cutting, grinding, wash-down procedures and all Personal Protective Equipment (PPE) regulations.

The following notations are used throughout in this manual.

! DANGER !

Danger: Denotes immediate hazards that will result in severe personal injury or death.

! WARNING !

Warning: Denotes hazards or unsafe practices that could result in personal injury.

! IMPORTANT !

Important: Denotes instructions that must be followed for proper installation and/or operation of equipment.

NOTE

Note: Denotes general items to assist the reader/ installer/ operator.

Please pay close attention to all of these items and warnings.
They have been included here for your safety and for ease of installation.

Table of Contents

Important Safety Information.....4

Provided Components.....5

Pre-Install Safety.....6

Installation Overview.....7

Installation Instructions.....8-12

Maintenance.....13

All safety rules defined in this document and all owner/employer as well as State and Federal safety rules must be strictly adhered to when working on/with this, or any, conveyor liner system.



! DANGER !

Do not touch or go near the conveyor belt or conveyor accessories when the belt is running. Your body or clothing can get caught and you can be pulled into the conveyor, resulting in severe injury or death

! DANGER !

Before installing, servicing, or adjusting the XN Wear Liner, turn off AND lock out/tag out all energy sources to the conveyor and conveyor accessories according to ANSI standards. Failure to do so could result in serious injury or death.

! DANGER !

If this equipment is to be installed in an enclosed area, observe all confined space entry regulations and test the atmosphere for gas levels and dust content levels before using a cutting torch, welding equipment or electric hand tools. Using a torch, welding, grinding or drilling in an area with gas or dust may cause an explosion and/or fire resulting in serious injury or death.

! WARNING !

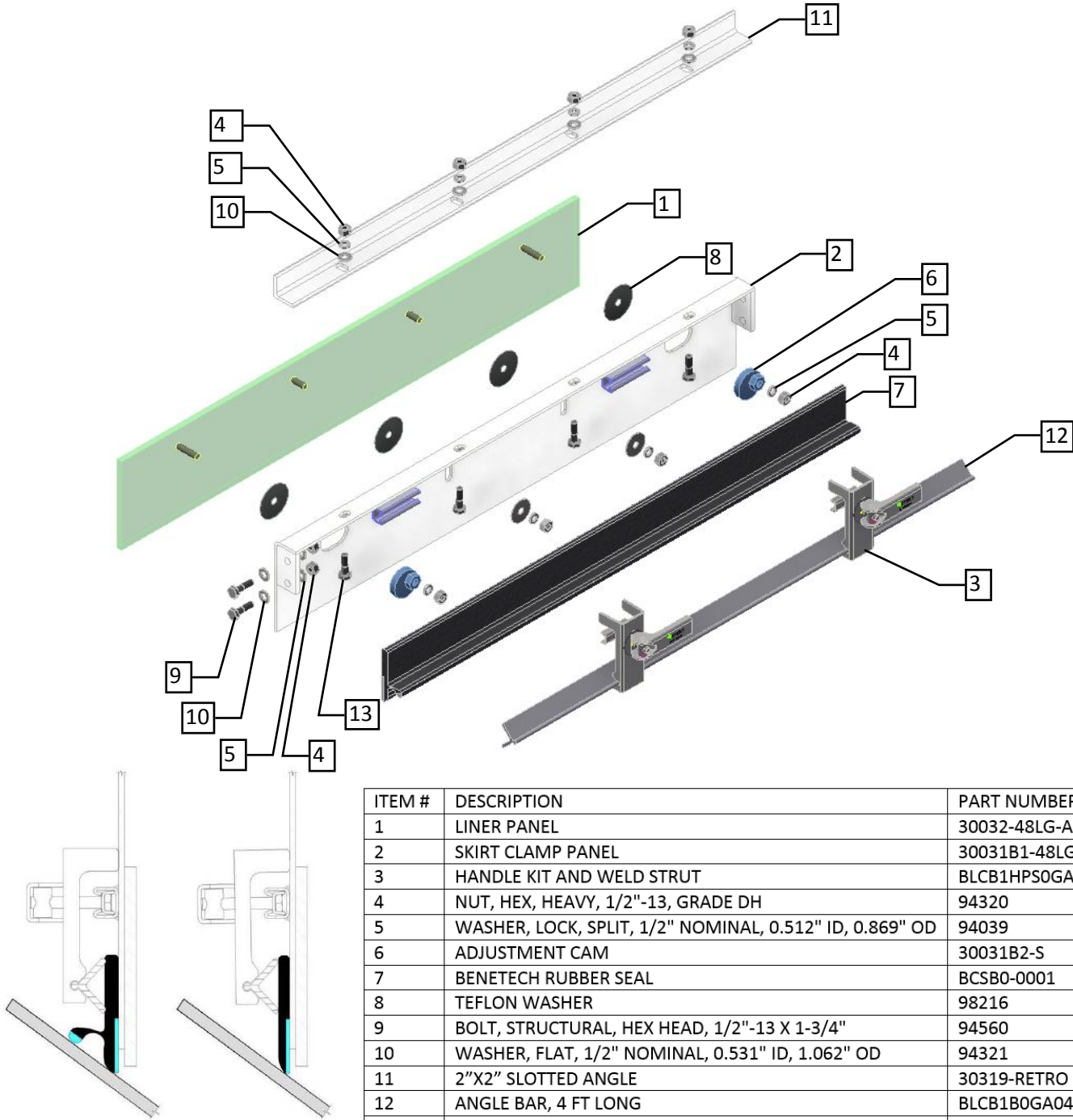
Before using a cutting torch, welders, or grinding equipment, cover the conveyor belt with a fire retardant/resistant cover. Make sure a water source/fire hose is readily available AND OPERATIONAL. Failure to do so can allow the belt to catch fire.

! WARNING !

XN Wear Liners are heavy and may require two people to lift. Attempting to lift the XN Wear Liner without assistance could result in injuries or damage to the equipment.

Provided Components

The parts listed below make up the XN Wear Liner assembly. The length and quantity of some parts may vary depending on length of the units that have been selected.



ITEM #	DESCRIPTION	PART NUMBER	QTY.
1	LINER PANEL	30032-48LG-AR25	1
2	SKIRT CLAMP PANEL	30031B1-48LG	1
3	HANDLE KIT AND WELD STRUT	BLCB1HPSOGAA	1
4	NUT, HEX, HEAVY, 1/2"-13, GRADE DH	94320	12
5	WASHER, LOCK, SPLIT, 1/2" NOMINAL, 0.512" ID, 0.869" OD	94039	12
6	ADJUSTMENT CAM	30031B2-S	2
7	BENETECH RUBBER SEAL	BCSB0-0001	4 FT
8	TEFLON WASHER	98216	4
9	BOLT, STRUCTURAL, HEX HEAD, 1/2"-13 X 1-3/4"	94560	4
10	WASHER, FLAT, 1/2" NOMINAL, 0.531" ID, 1.062" OD	94321	16
11	2"X2" SLOTTED ANGLE	30319-RETRO	4
12	ANGLE BAR, 4 FT LONG	BLCB1B0GA04	1
13	BOLT, STRUCTURAL, HEX HEAD, 1/2"-13 X 1-1/2"	92492	4

B-Plus Seal
Item #
BCSB0-0001

Classic Plus Seal
Item #
BCSD0-0001

Before Installing the XN Wear Liner

1. Inspect ALL shipping containers for damage and correct number of items (skids, pallets, cartons, boxes, etc.) being delivered. Report damage and/or shortages to delivery service immediately and fill out delivery service's claim form. Keep ALL damaged goods for examination. Benetech Inc is NOT responsible for damage occurring during transit.

2. If any items are missing, IMMEDIATELY contact BENETECH, INC. or an authorized representative.

3. Gather tools. Minimum tools required for installation are:

- Tape measure/ String
- Torch/Hole Saw
- Level/Straight Edge
- Welder/Drill
- Open/Box End Wrenches
- Socket Set
- Marker/Soapstone (Welders chalk)



4. If using a cutting torch or welding, test atmosphere for gas level or dust content. Cover conveyor belt with fire retardant cover. Verify locations of fire extinguishers and operational water hoses prior to begin cutting/welding operations.

! WARNING !

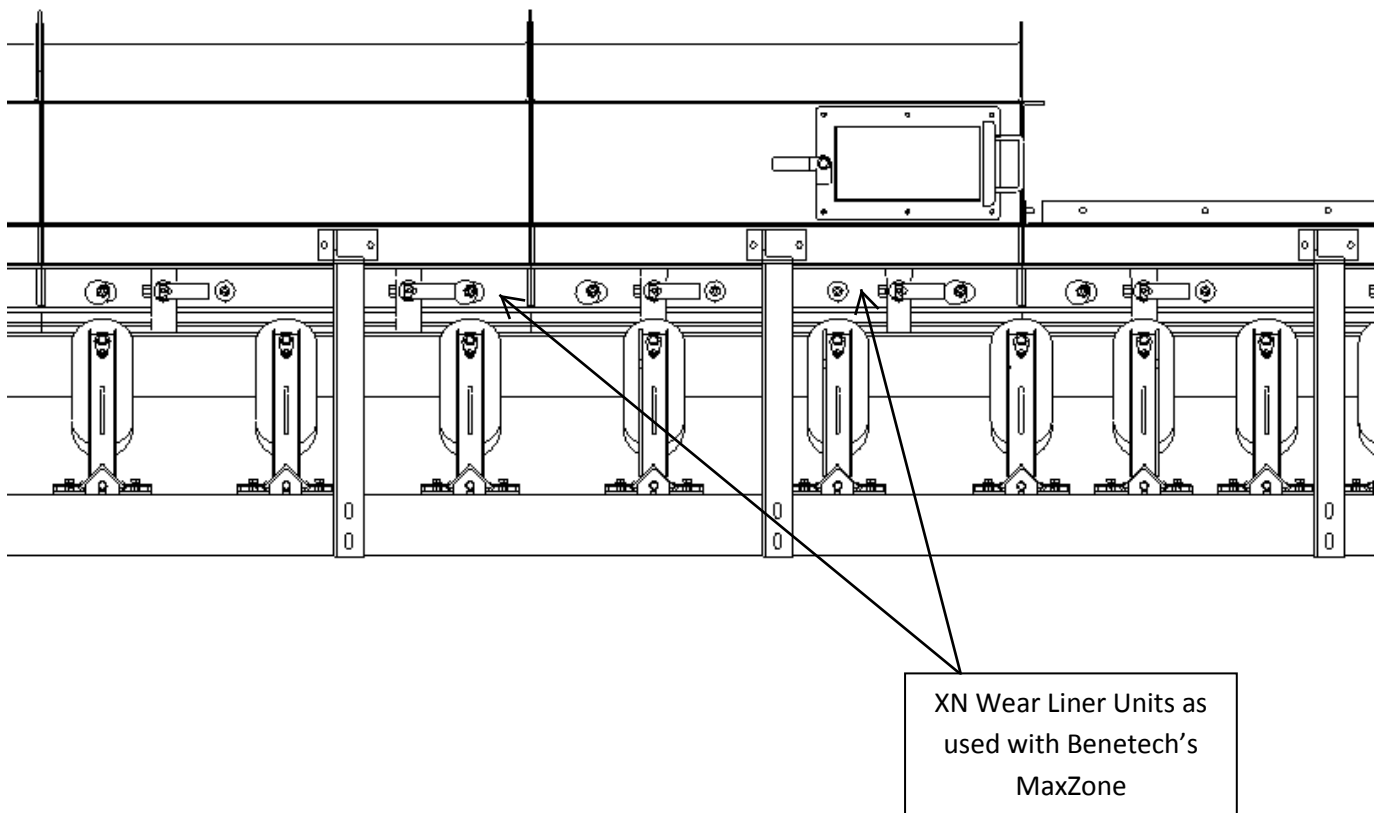
Before installing equipment, turn off AND lock out/tag out all energy sources to the conveyor and conveyor accessories according to ANSI standards and local plant regulations. Failure to do so could result in serious injury or death.

If equipment will be installed in an enclosed area, the atmosphere in the structure/area must be tested for gas levels and dust content levels before using a cutting torch, welding equipment, grinding equipment or electric powered tools. Using a cutting torch, welding, drilling or grinding in an area with gas or dust may cause an explosion.

Installation Overview

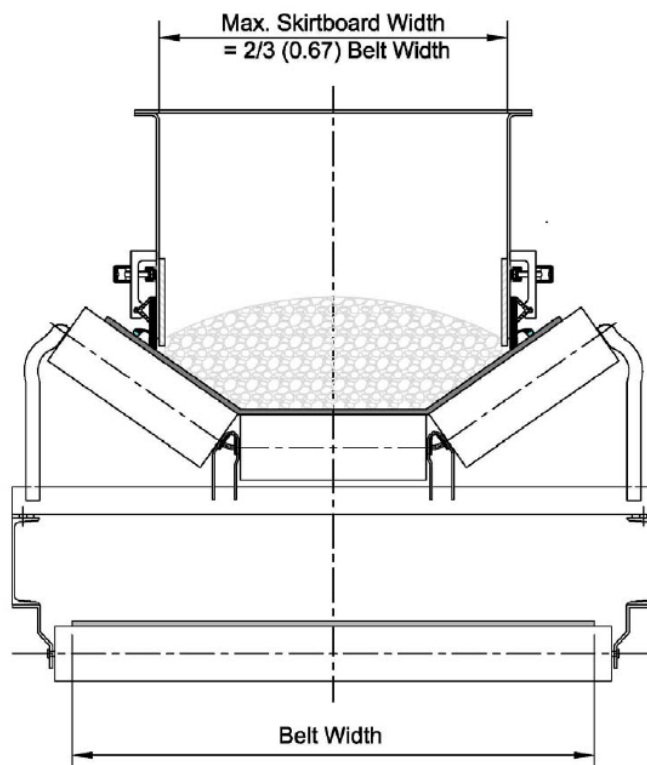
The XN Wear Liner is a skirt board liner system with an externally adjustable, internal liner. Internal liners prevent material abrasion damage to the side of the conveyor skirting. As the lower part of the liner wears in, a space is created beneath it that material can become impinged. This can cause severe damage to the conveyor belt. The XN Wear Liner can be adjusted downward, closing this gap, without excessive effort or time involved.

The XN Wear Liner can be fitted to any existing chute and skirting system, but also features mounting holes to match the Benetech MaxZone system. If you have a MaxZone system, refer to the MaxZone installation manual for installation instructions.



Installation Instructions

1. When Benetech XN Wear Liners are to be installed on existing skirt board systems, it is important to assure the system conforms to CEMA recommendations regarding minimum skirtboard width:



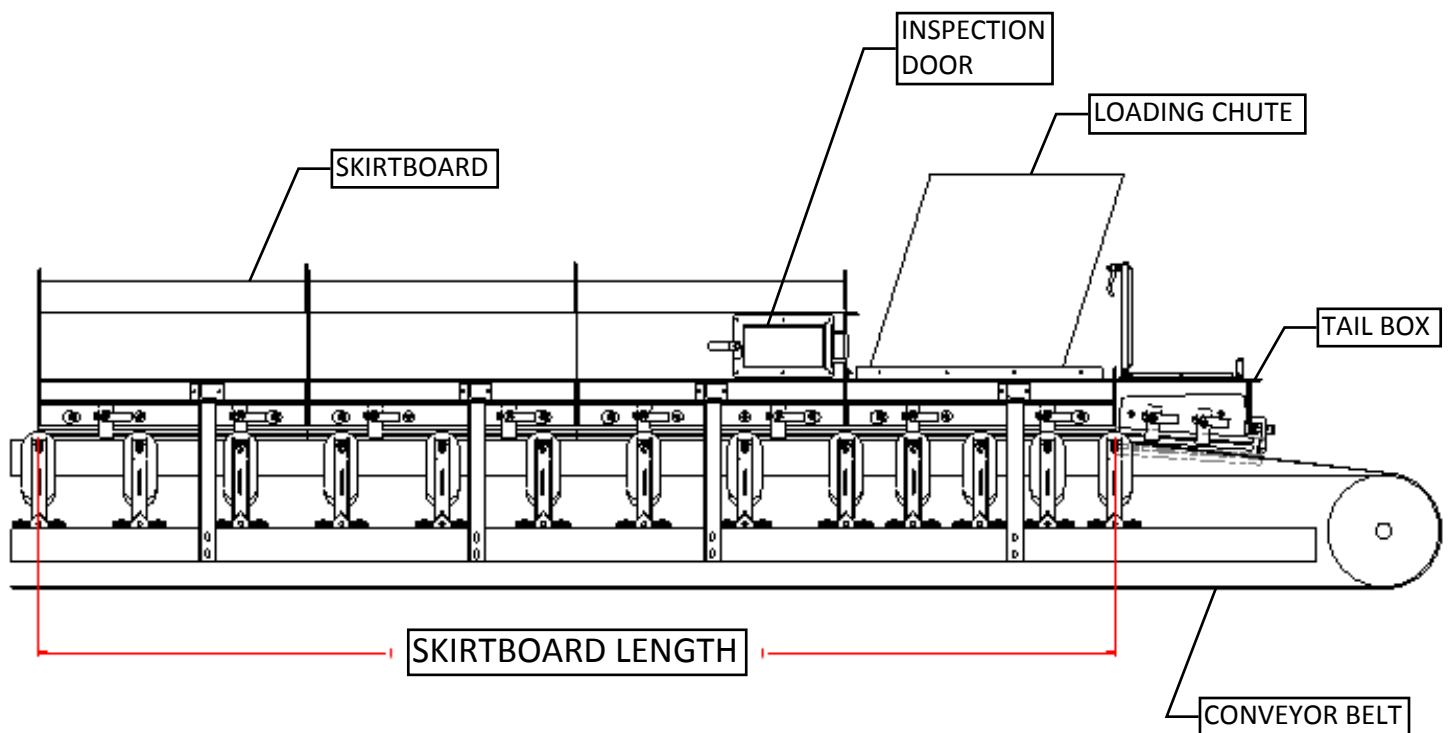
Belt Width (In)	Nom. Max. Skirtboard Width (In)
12	8
18	12
24	16
30	20
36	24
42	28
48	32
54	36
60	40
72	48
84	56
96	64

CEMA recommendations are related to maximum skirtboard width. Measured dimensions less than Nominal Maximum Skirtboard Width (see table) satisfy CEMA recommendations.

For measured width dimensions greater than the Nominal Maximum Skirtboard Width, consult your Benetech Sales Representative.

2. When Benetech XN Wear Liners are to be installed on existing skirt board systems, it is important to assure the system conforms to CEMA recommendations regarding minimum skirtboard length.

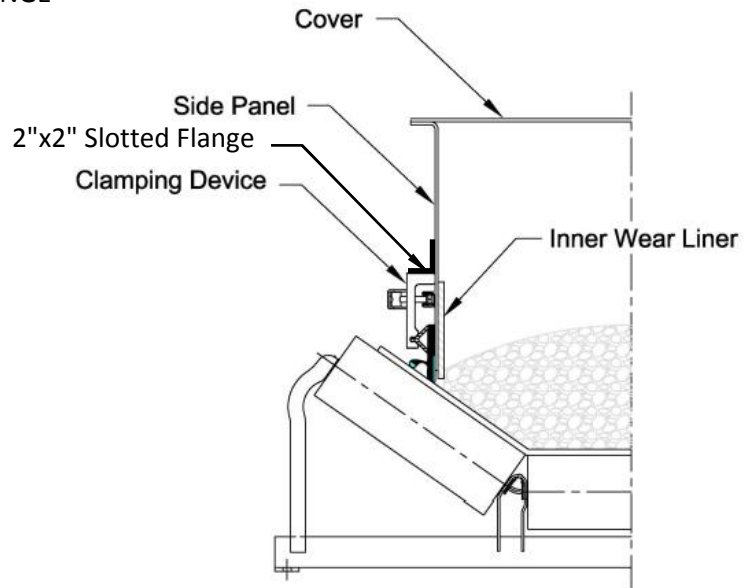
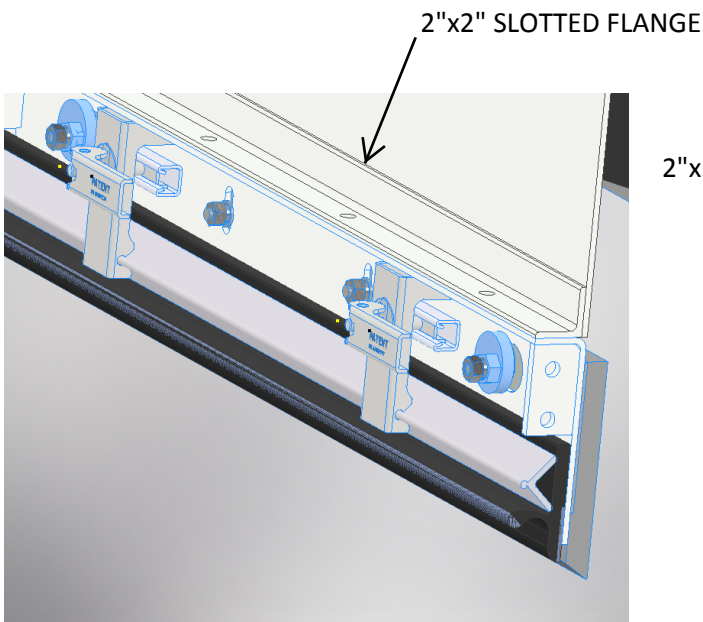
CEMA recommends (2) feet of skirtboard length for each 100FPM of conveyor belt speed with a minimum length of (3) feet.



! NOTE !

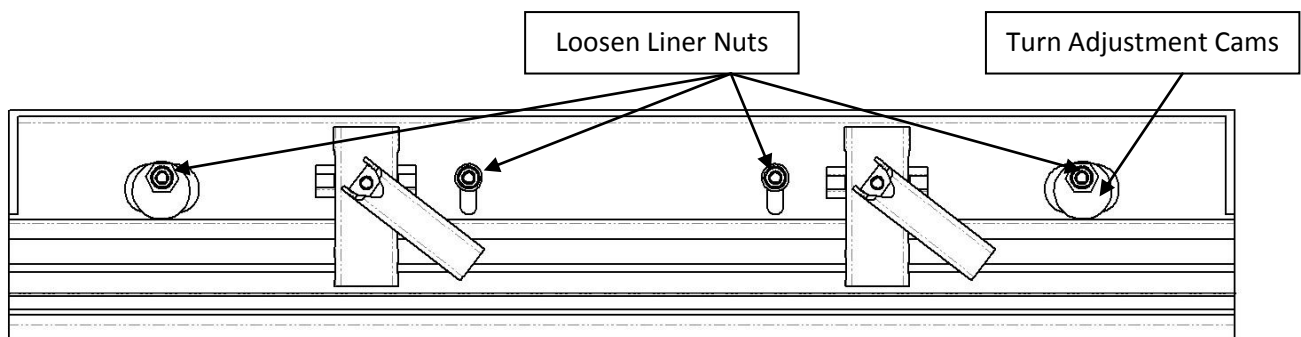
Recommended Skirtboard length is vital for proper dust containment. Skirtboards should always remain covered with side panels in place.

3. When Benetech XN Wear Liners are to be installed on existing skirt board systems, it is important to assure the system conforms to recommendations regarding skirtboard configuration.



- Skirtboard cover free of deterioration should be arranged to prevent area dusting.
- Skirtboard Side Panels should be free of deterioration.
- Clamping Devices: If existing belt seal clamping devices are to be reused, confirm condition, functionality, and conformance with dimensional data tables.

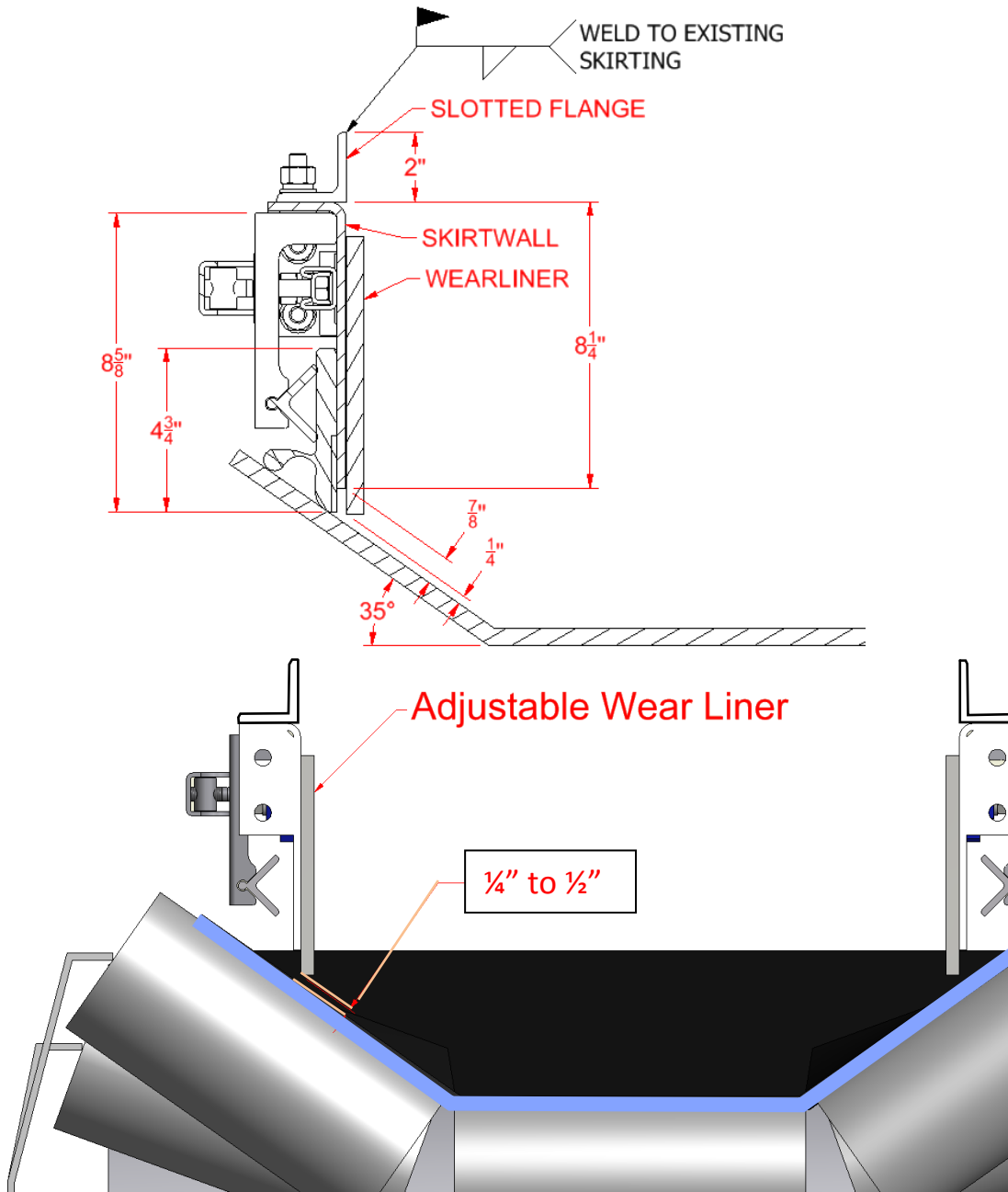
4. To adjust the liner panel, loosen the liner nuts, rotate the adjustment cams, and retighten the nuts.



! WARNING !

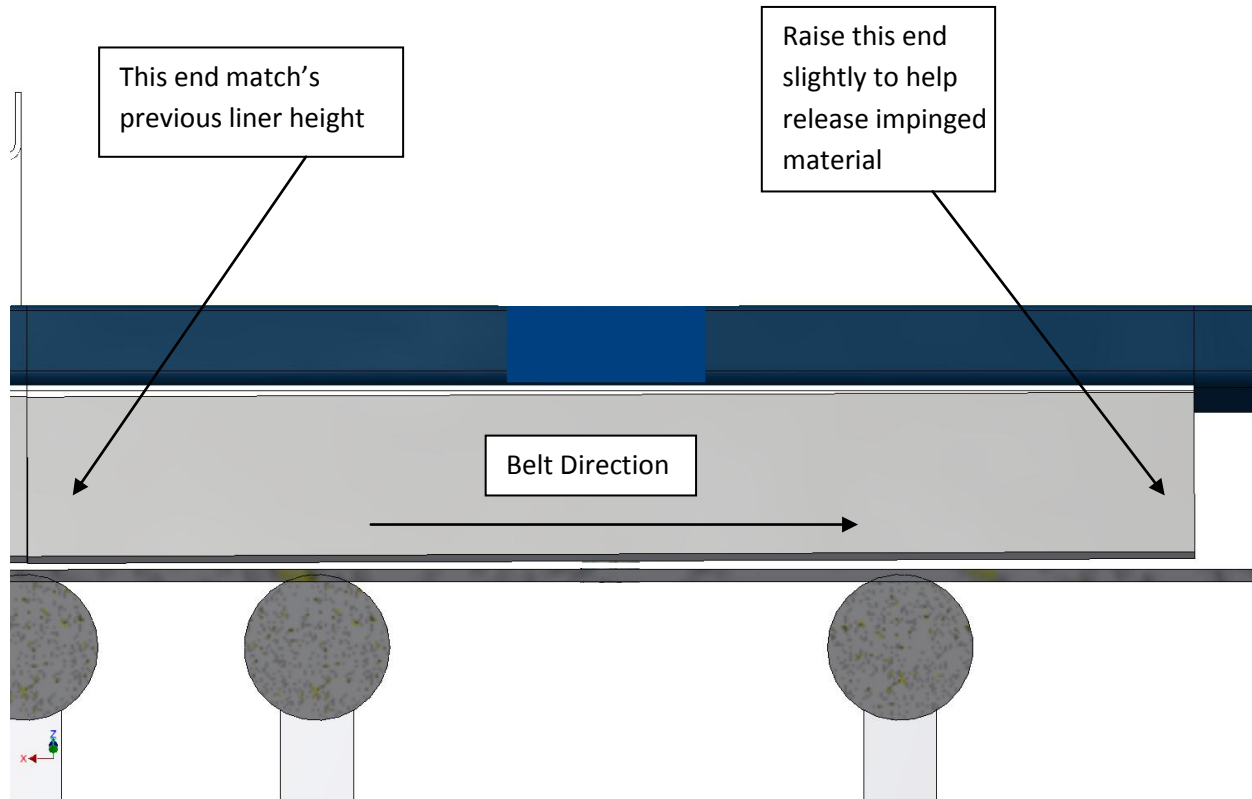
Placing liner panels closer than $\frac{1}{4}$ " to the belt trough, WILL cause serious belt damage.

5. Locate the Clamp Panel approximately $\frac{7}{8}$ " from the belt. Adjust the liner panel downward leaving a $\frac{1}{4}$ " to $\frac{1}{2}$ " gap from the belt. Weld the slotted flange to existing skirt wall. Bolt the clamp panel to the slotted flange. Care should be taken to assure liners are installed with self relief to avoid impingement.

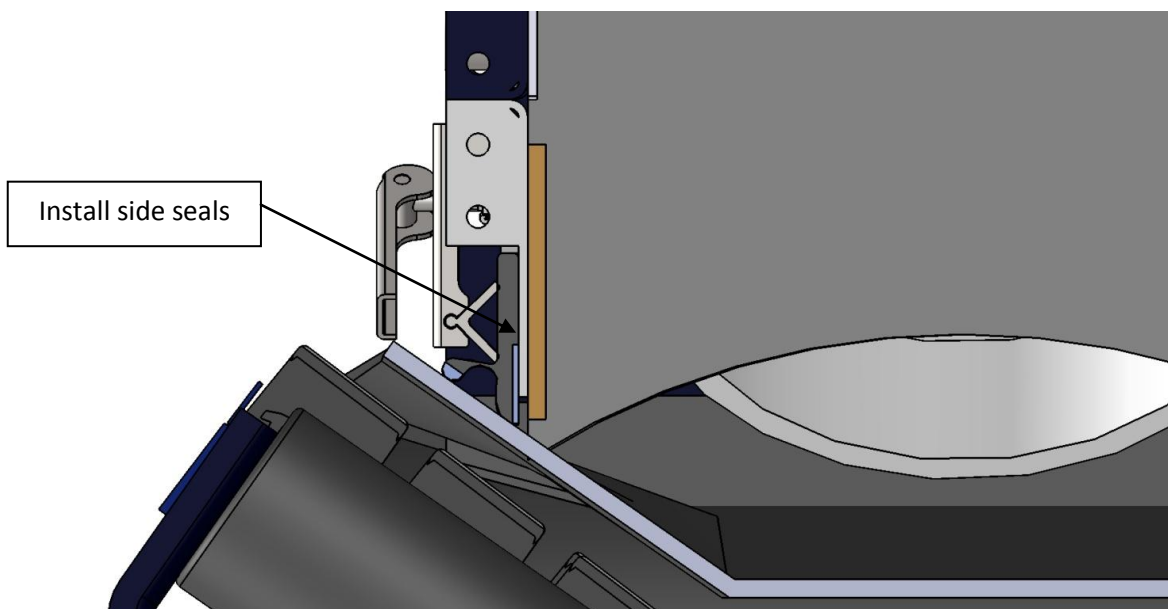


6. The XN Wear Liners that follow, need to be lowered and spaced from the belt just like in step 5. *However*, the exit side of these liners should be adjusted slightly higher allowing trapped material to loosen and move away with the belt.

NOTE: The first set of liners may need to be re-positioned.



7. Install chosen Rubber Seals allowing them to make contact with the belt.



Maintenance

Liner wear on all liner panels should be checked periodically, especially in the first few weeks of operation. Adjustments should be made to the liner height as soon as significant wear is observed.

To re order liner panels, rubber seals, or rubber seal quick release clamps, contact your Benetech sales Representative.

! WARNING !

When adjusting liner panels, use ¼" shims to measure ¼" of space from the belt trough. Liner contact to the belt WILL cause catastrophic belt damage.

! WARNING !

Failure to remove tools from installation area and conveyor belt before turning on energy source can cause serious injury to personnel and damage to belt.

! WARNING !

Do not touch or go near conveyor belt or conveyor accessories when conveyor belt is running. Body or clothing can get caught and pull body into conveyor belt, causing severe injury or death.